



July 2015

CONTENTS

1. Macro magnitudes
2. Employment
3. Consumer prices. Selling and purchase prices. Wages
4. External trade
5. Agricultural production
6. International markets
7. Agricultural Policy and Financing
8. Food & beverages manufacturing industry
9. Consumption, wholesaling and retailing
10. Fisheries and aquaculture
11. Rural areas
12. Forestry sector
13. Environment

Main economic indicators for Agriculture and Manufacturing Industry of Food, Beverages and Tobacco

Indicator	Period	Sector	Value	Inter-annual variation	% Total Spain
GVA million €	2014	Total	965,110	0.69%	
		Agriculture	24,050	-9.51%	2.5%
Employed thousand people	2013	FBT Industry	24,448	-11.10%	2.5%
		Total	17,866.5	2.96%	
Unemployment Rate (% actives)	2nd Q 2015	Agriculture	740.4	0.15%	4.1%
		FBT Industry	479.0	0.38%	2.7%
		Total	23.8%	-2.2 *	
		Agriculture	28.2%	5.1 *	
		FBT Industry	10.6%	-1.8 *	

(*) The difference between two percentages is expressed as percentage points differential.

Agricultural sector: Agriculture, Livestock, Fisheries and Forestry.

FBT: Food, Beverages and Tobacco Industry

GVA: Gross value added.

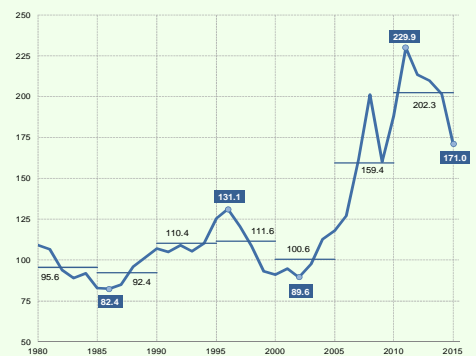
Data Source: National accounts and Labour Force Survey. INE (National Statistics Institute, Spain).

WORLD AGRICULTURAL COMMODITY PRICES EVOLUTION, 1980-2015.

SHARE OF AGRICULTURAL IMPORTS IN EXPORTS BY COUNTRY GROUPS.

The FAO food prices index evolution from 1980 to date shows that the agricultural commodity international prices have had a stable behavior between 1980 and 2002. Afterwards, there has been a high increase in prices until 2011, where the index reached a maximum of 229,9. Finally, they descended again up to 171,0 in 2015.

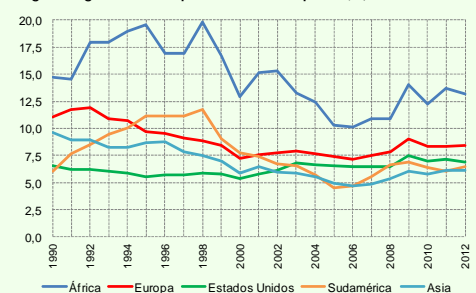
Figure: FAO Food Price Index evolution (2002=2004=100)



Source: Compiled by authors from FAOSAT Data

All the countries examined have to make less effort to import products in relation to their exports at the end of the period examined (2012) in comparison with the beginning (1990). This is because the export prices have raised more than import prices. The increase of the food price index between 2002 and 2011 may have had a reflection in the evolution of this ratio, this fact is better observed in Africa, perhaps due to its higher exposition to imports.

Figure: Agricultural imports vs Total exports (%). 1990 to 2012



Source: Compiled by authors from FAOSAT Data

[More information available in the Spanish version](#)

MAIN INDICATORS SUMMARY

Last year / period / month available. In parentheses: Inter-annual variation

<p>Agricultural Output (Real Value, Deflated) (Economic Accounts for Agriculture) 37,040 million €, 2014 2nd Estimate (-4.1%)</p> <p>Gross Value Added (Real Value) (Economic Accounts for Agriculture) 19,609 million €, 2014 2nd Estimate (-6.7%)</p> <p>Agriculture Factor Income (Real Value) (Economic Accounts for Agriculture) 19,887 million €, 2014 2ª Est. (-7.2%)</p> <p>Employed people in Primary Sector (Agriculture, Livestock, Forestry and Fisheries) 740,400 people, II Q 2015 (+0.15%)</p> <p>Unemployed people in Primary Sector 252,200 people II Q 2015 (-3.52%)</p> <p>Employed people in Manufacturing of Food, Beverages and Tobacco 479,000 people, II Q 2015 (+0.38%)</p> <p>Unemployed people in Manufacturing of Food, Beverages and Tobacco 47,700 people, II Q 2015 (-6.47%)</p> <p>CPI (Food and Non-Alcoholic Beverages) +1.0% January to June 2015 (with respect to same period of 2014)</p> <p>Prices Received by farmers Global Index -7.1% in 2014</p> <p>Commonly Used Goods Prices Paid Index -3.7% in 2014</p>	<p>External Trade Balance of Agricultural & Fisheries Sector (including processed and non food products) 9,772 million €, RY April 2015 (-1.07%)</p> <p>Cereal (Winter-Autumn) Production Forecast 14,269 thousand tonnes, provisional 2015</p> <p>Vineyard Production Forecast 44,306.7 thousand hectolitres Wine + Grape Must, provisional 2015</p> <p>Olive Oil Production Forecast 836.4 thousand t., provisional 2015</p> <p>Soft Wheat international price (FAO) 245.35 \$/t., average 2014, (-11.5%)</p> <p>European Agricultural Guarantee Fund (EAGF) Budget 5,644.9 million €, budgetary year 2015 (+1.12%)</p> <p>Total Loan Agriculture, Livestock and Forestry. Fisheries and aquaculture are not included 16,350 million €, I Q 2015 (+1.1%)</p> <p>Food, Beverages and Tobacco Industry Net Amount Turnover 103,254 million €, 2013 (+1.4%)</p> <p>Production Index (IPI). Food Industry -1.0% interannual average January-May 2015</p> <p>Price Index (IPRI) Food Industry +0.7% interannual average January-May 2015</p>	<p>Household Food Consumption (Value) 66,431 million €, RY April 2015 (-2.5%)</p> <p>Tangible Assets Investment 3,162 million € (approximation), 2013 (+9.9%)</p> <p>Output value of Aquaculture 431.9 million €, 2013 (-0.9%)</p> <p>Total Fish Catches (Value) 2,165.4 million €, 2013 (+21.3%)</p> <p>Standard Output of Agricultural Holdings 35,979 million €, 2013</p> <p>Drip Irrigation Area 1,756,138 ha, 2014</p> <p>Wood pruning and firewood extraction 15.1 million m3, 2013 (+6.7%)</p> <p>Water reservoir stocks 39,301 hm3, July 2015</p> <p>Total forest area burnt by forest-fires 46,721 ha, 2014 (-16.1%)</p> <p>Electricity Production with Renewable Energy 136,624 GWh. 2013 (+20.8%)</p>
--	---	--

S.G. Analysis, Prospective and Coordination: <http://www.magrama.gob.es/es/ministerio/servicios/analisis-y-prospectiva/default.aspx>

Mail: sgapc@magrama.es. The content of this report may be reproduced total o partially, providing data source is stated. Document must be referenced as:

"Analysis and Prospective - Indicators Series no. 16, July 2015". Published by: Ministry of Agriculture, Food and Environment. NIPO: 280-15-049-X

State General Administration Publications Catalogue: <http://publicacionesoficiales.boe.es>



1. AGRICULTURAL MACRO MAGNITUDES. In 2014 Spain occupied the first place in Factor Income in real value in the UE, with 19,887 million euro.

REAL VALUE (deflated by GDP implicit price index) million euro	EUROPEAN UNION - 15			SPAIN			FRANCE			GERMANY			ITALY		
	2014	Average 09 to 13	Var.14/13 (%)	2014	Average 09 to 13	Var.14/13 (%)	2014	Average 09 to 13	Var.14/13 (%)	2014	Average 09 to 13	Var.14/13 (%)	2014	Average 09 to 13	Var.14/13 (%)
MAIN MACROMAGNITUDES. Million euros															
Output of Agriculture (O.A)	291,775	288,308	-3.4	37,040	36,097	-4.1	61,928	62,257	-1.6	45,395	46,195	-4.0	42,231	42,426	-5.9
Crop Output	146,886	151,008	-5.5	22,050	22,108	-7.1	34,654	36,357	-3.3	21,380	23,016	-5.7	23,213	24,074	-9.2
Animal Output	128,845	121,806	-1.4	14,558	13,610	0.8	23,487	22,273	0.7	22,361	21,420	-2.6	14,430	14,100	-2.9
Animals	75,167	74,215	-4.3	10,778	10,190	-1.3	13,991	13,957	-4.6	10,984	11,704	-8.6	8,768	8,680	-3.5
Animal Products	53,678	47,591	3.0	3,780	3,420	7.2	9,496	8,316	9.7	11,377	9,716	3.9	5,662	5,421	-2.1
Intermediate Consumption (I.C.)	178,653	177,990	-3.9	18,651	17,421	-0.7	41,099	39,738	-2.8	28,183	31,680	-7.0	20,044	20,058	-2.8
energy and lubricants	18,800	18,434	-4.7	1,788	1,528	1.5	3,826	3,517	-3.3	3,300	3,376	-6.4	2,523	2,462	-3.8
Gross Value Added (GVA)	122,165	118,885	-2.2	19,609	19,782	-6.7	22,879	24,322	1.9	17,336	14,644	1.2	23,610	23,764	-8.0
Other Subsidies on production	48,365	48,144	-0.1	4,701	4,377	3.8	9,835	9,615	0.0	7,529	7,654	-0.4	11,768	11,939	-0.9
Other taxes on production	3,694	3,865	-1.2	305	248	7.9	1,389	1,359	-1.8	200	405	-0.6	630	723	1.0
Fixed capital consumption	36,982	39,366	-2.5	5,284	5,261	1.0	6,995	7,366	-1.5	6,448	6,759	-2.5	4,224	4,399	0.5
Factor Income (F.I)	107,088	106,243	-3.2	19,887	20,419	-7.2	18,650	20,713	1.8	16,054	13,343	0.5	15,436	15,501	-11.1
Indicator A (2005=100)	118.2	112.0	-2.0	106.4	99.8	-5.3	107.7	115.7	2.8	163.7	132.8	0.3	100.3	96.4	-10.0
STRUCTURAL DATA															
Labour Force Input (thousand AWU)	4,882	5,124	-1.3	824	904	-2.1	774	801	-0.9	504	518	0.2	1,071	1,121	-1.2
UAA (thousand ha)	126,113	126,113	--	23,753	23,753	--	27,837	27,837	--	16,704	16,704	--	12,856	12,856	--
MACROMAGNITUDES COMPOSITION															
Factor Income / O.A.	36.7	36.9	0.1	53.7	56.6	-1.8	30.1	33.3	1.0	35.4	28.9	1.6	36.6	36.5	-2.1
IC / O.A.	61.2	61.7	-0.4	50.4	48.3	1.7	66.4	63.8	-0.9	62.1	68.6	-2.0	47.5	47.3	1.5
En. & Lub. / O.A.	6.4	6.4	-0.1	4.8	4.2	0.3	6.2	5.6	-0.1	7.3	7.3	-0.2	6.0	5.8	0.1
O. Subsidies / F.I.	34.5	37.1	0.2	26.6	25.8	2.2	37.5	35.6	-1.3	40.2	50.7	-1.2	27.4	28.4	3.2
Fixed Capital C. / F.I.	45.2	45.3	1.4	23.6	21.4	2.5	52.7	46.4	-1.0	46.9	57.4	-0.4	76.2	77.0	7.8
PRODUCTIVITY															
GVA ÷ AWU (€/AWU)	25,022	23,202	-0.9	23,789	21,881	-4.7	29,559	30,362	2.8	34,396	28,279	1.0	22,045	21,207	-6.9
GVA ÷ ha (€/ha.UAA)	969	943	-2.2	826	833	-6.7	822	874	1.9	1,038	877	1.2	1,836	1,848	-8.0

Source: EUROSTAT. Data extracted in July 2015.

Macromagnitudes: Economic accounts for agriculture - values at real prices (aact_eaa04) http://appsso.eurostat.ec.europa.eu/nui/show.do?dataset=aact_eaa04&lang=en

Indicator A: Economic accounts for agriculture - agricultural income (Indicators A, B, C) (aact_eaa06) http://appsso.eurostat.ec.europa.eu/nui/show.do?dataset=aact_eaa06&lang=en

Utilised Agricultural Area (UAA): Farm Structure 2010, Key Farm variables (ef_kvftaa) http://appsso.eurostat.ec.europa.eu/nui/show.do?dataset=ef_kvftaa&lang=en

Annual Work Units (AWU): Agricultural Labour :: absolute figures (1 000 annual work units) (aact_ali01)

2. EMPLOYMENT. The employment in the primary sector rose by 0.15% in the II Q 2015. In the agro-food industry, the employment increased by 0.38% in the same period. The average number of people affiliated to the Social Security system from January to June 2015 in the primary sector is 1,112,370 people, having decreased by 0.26% with respect to the same period of 2014. In this same period, there were 214,914 unemployed people, -2.03% interannual.

PRIMARY SECTOR	2015 2nd Quarter ('000 people)	Variation with respect to previus quarter		Variation with respect to same quarter of 2014	
		Difference ('000 people)	Percentage	Difference ('000 people)	Percentage
Active	992.6	-5.9	-0.59%	-8.1	-0.81%
Employed	740.4	23.0	3.21%	1.1	0.15%
full-time	673.7	18.4	2.81%	11.3	1.71%
part-time	66.7	4.6	7.41%	-10.1	-13.15%
Unemployed	252.2	-28.9	-10.28%	-9.2	-3.52%
Unemployment rate (*)	25.41%	-2.74	-	-0.71	-
Divisions 01, 02 and 03 NACE-2009					
Agriculture, livestock and hunting (Div.01)					
Active	924.9	-5.4	-0.58%	-4.0	-0.43%
Employed	685.3	23.3	3.52%	4.6	0.68%
Unemployed	239.6	-28.7	-10.70%	-8.6	-3.46%
Unemployment rate (*)	25.91%	-2.93	-	-0.81	-
Forestry (Div.02)					
Active	35.9	0.2	0.56%	2.7	8.13%
Employed	26.9	1.0	3.86%	2.8	11.62%
Unemployed	9.0	-0.8	-8.16%	-0.1	-1.10%
Unemployment rate (*)	25.07%	-2.38	-	-2.34	-
Fisheries and aquaculture (Div.03)					
Active	31.8	-0.7	-2.15%	-6.7	-17.40%
Employed	28.2	-1.4	-4.73%	-6.3	-18.26%
Unemployed	3.6	0.7	24.14%	-0.4	-10.00%
Unemployment rate (*)	11.32%	2.40	-	0.93	-
FOOD, BEVERAGES AND TOBACCO INDUSTRY					
2015 2nd Quarter ('000 people)					
Variation with respect to previus quarter					
Variation with respect to same quarter of 2014					
		Difference ('000 people)	Percentage	Difference ('000 people)	Percentage
Active	526.7	-8.2	-1.53%	-1.5	-0.28%
Employed	479.0	0.8	0.17%	1.8	0.38%
Unemployed	47.7	-9.0	-15.87%	-3.3	-6.47%
Unemployment rate (*)	9.06%	-1.54	-	-0.60	-
WATER SUPPLY, SEWERAGE, WASTE MANAGEMENT AND REMEDIATION ACTIVITIES					
2015 2nd Quarter ('000 people)					
Variation with respect to previus quarter					
Variation with respect to same quarter of 2014					
		Difference ('000 people)	Percentage	Difference ('000 people)	Percentage
Active	142.6	2.3	1.64%	24.0	20.24%
Employed	134.2	4.0	3.07%	22.8	20.47%
Unemployed	8.4	-1.7	-16.83%	1.2	16.67%
Unemployment rate (*)	5.89%	-1.31	-	-0.18	-

SOCIAL SECURITY	2015 January to june	with respect to the same period of 2014	
		Difference	Percentage
Primary Sector: Agriculture, livestock, fisheries, aquaculture and forestry			
General Scheme	55,408	3,714	7.18
Special Agricultural Scheme	754,933	-5,721	-0.75
Special Scheme: Self-employed	266,607	124	0.05
Special Scheme: Marine workers	35,422	-979	-2.69
TOTAL	1,112,370	-2,862	-0.26
Food, beverages and tobacco industry			
General Scheme	335,920	4,805	1.45
Special Scheme: Self-employed	47,422	2,356	5.23
TOTAL	383,342	7,162	1.90
UNEMPLOYED PEOPLE REGISTERED IN EMPLOYMENT OFFICES			
2015 January to june with respect to the same period of 2014			
Primary sector			
		average people	Difference Percentage
Agriculture, livestock	196,035	-3,220	-1.62
Forestry and logging	13,125	-907	-6.46
Fishing and aquaculture	5,754	-321	-5.28
TOTAL	214,914	-4,447	-2.03
Food, beverage and tobacco industry			
Food industry	79,845	-4,788	-5.66
Manufacture of beverages	8,052	-483	-5.66
Manufacture of tobacco products	816	-29	-3.43
TOTAL	88,712	-5,299	-5.64

Sources and notes:

Active, Employed and Unemployed. Labour Force Survey, Spain Statistics Institute (INE).

The variations between two percentages are expressed in differential points

The LFS only classifies unemployed people into a specific economic sector those who have leaved up their job 12 months ago or less. Therefore, sectoral unemployment rates are not comparable to general unemployment rate.

Affiliation and people registered in employment offices. Ministry of Employment and Social Security. www.empleo.gob.es

3. PRICES. Prices received by farmers fell by 7.1% from 2014 compared with 2013 (plant products -11.4% and animal products -1.5%). In the same period, prices paid for goods currently consumed decreased by 3.7%. The Consumer Price Index of food and non-alcoholic beverages increased by 1% in January-June 2015.

PRICES RECEIVED BY FARMERS				PRICES RECEIVED BY FARMERS				PRICES PAID BY FARMERS			
Interannual variation (%)	2012	2013	2014	Interannual variation (%)	2012	2013	2014	Interannual variation (%)	2012	2013	2014
GLOBAL INDEX	9.9	2.8	-7.1	Animal products	9.1	1.5	-1.5	Goods currently consumed	5.5	-0.1	-3.7
Plant products	10.6	3.7	-11.4	Cattle	10.5	3.3	-3.4	Seeds and saplings	5.2	0.2	12.2
<i>Agricultural products</i>	10.9	3.9	-11.5	Sheep	2.4	-6.0	4.9	Fertilisers	4.7	-3.2	-4.9
Cereals	10.1	-15.6	-7.2	Goats	-1.2	-0.6	-2.5	Feeding stuffs	7.2	0.0	-8.0
Tubers	15.7	40.2	-49.1	Pigs	8.8	8.8	-5.2	Fuel	8.1	-2.4	-5.9
Vegetables	5.8	7.2	-10.9	Poultry	8.5	-3.4	-4.8	Electricity	8.1	3.2	13.6
Citrus fruits	-5.1	16.4	-0.1	Milk	0.4	10.4	6.8	Lubricants	3.0	1.8	-0.1
Non citrus fruits	2.3	6.1	-10.1	Eggs	45.5	-30.1	0.0	Investment goods	1.8	2.2	1.5
Wine and grape must	46.6	-6.5	-23.3					Farm machinery	2.8	3.2	2.2
Olive oil	5.2	28.3	-5.5					Agricultural wages	0.2	0.5	0.2
<i>Forestry products</i>	-4.0	-4.4	-2.7								

Source: PRI, PPI: Ministry of Agriculture, Food and Environment. Base Year 2005=100 (prices), 1986=100 (wages).

Consumer Price Index -CPI- (2011=100)						
2008 to 2014: Interannual variation ⁽¹⁾ . 2015: Variation from January to June ⁽²⁾						
SPAIN	General CPI	Food and non-alcoholic beverages	Unprocessed food	Processed food	Liquid and solid fuels	All items excl. Energy and unprocessed food
2008	4.1	5.9	4.0	7.2	13.6	3.2
2009	-0.3	-1.1	-1.3	-1.2	-14.7	0.8
2010	1.8	-0.8	0.0	-1.3	15.3	0.6
2011	3.2	2.1	1.8	2.0	16.5	1.7
2012	2.4	2.3	2.3	2.3	8.8	1.6
2013	1.4	2.8	3.6	2.5	0.9	1.4
2014	-0.2	-0.3	-1.2	0.2	-2.6	0.0
2015 January to June	0.9	1.0	1.9	0.5	3.3	0.5

EU-28: Harmonized Consumer Price Index -HCPI- (2005=100)			
EU-28		SPAIN	
General CPI	Food and non-alcoholic beverages	General CPI	Food and non-alcoholic beverages
3.7	6.4	4.1	5.9
1.0	1.0	-0.2	-1.1
2.1	1.0	2.0	-0.4
3.1	3.4	3.1	1.7
2.6	3.0	2.4	2.1
1.5	2.6	1.5	2.8
0.6	-0.2	-0.2	-0.3
0.6	1.2	1.0	0.5

Sources: CPI: National Statistics Institute (INE, Spain), HCPI: EUROSTAT. The CPI of all items excluding energy and unprocessed food is an indicator of the level of consumption in the economy

(*) Variation of the average of mensural prices of the last available period with respect to the last year.

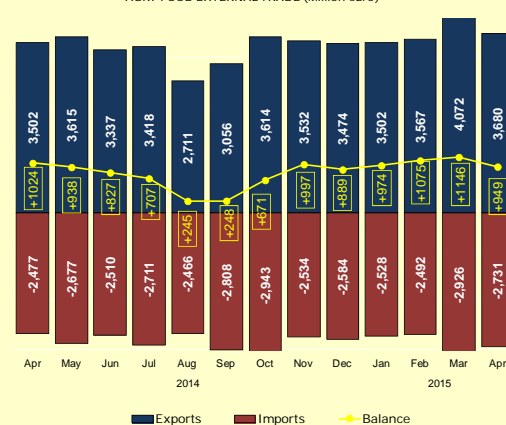
(1) Variation between the average of the 12 mensural indexes in a year compared to the same average in the previous year.

(2) Variation of the index in a particular month with respect to the same month of the previous

4. EXTERNAL TRADE. The external trade annual balance of the Spanish agricultural and fisheries sector from May 2014 to April 2015 (rolling year) increases by 0.98%, up to 10,038 million euro.

Agri-food External Trade million euro		Rolling year 2015 april	Rolling year 2014 april	Var.(%) rolling year april 2015/14
Total international trade, SPAIN	Exp	243,888	234,396	4.05
	Imp	267,488	254,664	5.04
	Balance	-23,600	-20,268	-16.44
Agricultural and fisheries sector (A+B)	Exp	41,579	40,101	3.69
	Imp	31,912	30,328	5.22
	Balance	9,667	9,772	-1.07
A. Food sector (a+b)	Exp	37,949	36,258	4.67
	Imp	27,912	26,318	6.06
	Balance	10,038	9,940	0.98
a. Agricultural food (a1+a2)	Exp	34,896	33,333	4.69
	Imp	22,455	21,432	4.77
	Balance	12,441	11,900	4.54
a1. Non processed agricultural food sector	Exp	12,945	12,576	2.94
	Imp	8,368	7,690	8.82
	Balance	4,577	4,886	-6.31
a2. Processed agricultural food sector	Exp	21,950	20,757	5.75
	Imp	14,087	13,742	2.51
	Balance	7,864	7,015	12.10
b. Fisheries food (b1+b2)	Exp	3,054	2,925	4.40
	Imp	5,457	4,885	11.69
	Balance	-2,403	-1,961	-22.58
b1. Non processed fisheries food sector	Exp	555	502	10.57
	Imp	1,126	1,048	7.51
	Balance	-571	-546	-4.70
b2. Processed fisheries food sector	Exp	2,498	2,423	3.12
	Imp	4,330	3,838	12.83
	Balance	-1,832	-1,415	-29.47
b. Non food subsector (c+d+e)	Exp	3,630	3,843	-5.55
	Imp	4,000	4,010	-0.26
	Balance	-370	-168	-120.94
c. Agricultural excluding food	Exp	1,781	1,820	-2.16
	Imp	2,111	2,046	3.18
	Balance	-330	-226	-46.22
d. Fisheries excluding food	Exp	49.8	49	0.78
	Imp	47.7	37	27.30
	Balance	2.1	12	-82.73
e. Forestry	Exp	1,799	1,973	-8.83
	Imp	1,841	1,927	-4.45
	Balance	-42.0	46	-190.58

AGRI-FOOD EXTERNAL TRADE (Million euro)



E: Exports; I: Imports; Balance = Exports - Imports

Data source: Compiled by authors, based on information supplied by the Secretary of State for Trade (Ministry of Economy).

5. AGRICULTURAL PRODUCTION. Crops: Average production between 2011 and 2013 compared to 2008-2010 increases in durum wheat (+24.9%), maize (+26.4%), pulses (+28.2%), sunflower (+7.0%), apricot (+18.5%), vineyard for processing (+7.7%) or olive tree for olive oil (+4.2%). Decreases in several crops: barley (-9.3%), sugar beet (-14.8%), vegetables (-5.5%), apple tree (-11.1%), pear tree (-9.75%) or almond tree (-15.8%). **Livestock:** Average production between 2012-2014 compared to 2009-2011 increases in pigs (+3.6%) and poultry (+3.6%), fall in rest of species: cattle (-3.3%), sheep (-8.7%) or goats (-11.1%).

	Surface (thousand hectares)					Production (thousand tons)						
	Yearbook				May 2015 preview		Yearbook				May 2015 preview	
	2013	A=Average 08-10	B=Average 11-13	Var. (%) B / A	2014 (p)	2015 (a)	2013	A=Average 08-10	B=Average 11-13	Var. (%) B / A	2014 (p)	2015 (a)
Grain Cereals	6,268.0	6,285.7	6,141.2	-2.3	6,260.8	6,213.7	25,374.0	20,648.1	21,670.8	5.0	20,425.8	
Common wheat	343.4	520.5	377.5	-27.5	295.7	311.2	933.3	1,195.4	777.7	-34.9	789.2	825.3
Durum wheat	1,781.6	1,405.7	1,725.1	22.7	1,871.7	1,853.0	6,811.7	4,663.7	5,826.1	24.9	5,698.6	5,166.7
Barley	2,784.3	3,132.4	2,725.3	-13.0	2,785.8	2,760.4	10,005.0	8,906.7	8,082.8	-9.3	6,933.5	6,987.2
Maize	442.3	345.2	400.7	16.1	433.9	392.6	4,888.5	3,519.4	4,450.2	26.4	4,749.8	
Pulses	378.0	322.2	451.4	40.1	441.7	452.1	503.0	350.4	449.1	28.2	381.6	
Dried peas	122.3	154.5	172.4	11.6	138.6	144.7	201.3	179.0	191.9	7.2	134.9	
Potatoes	72.4	81.6	74.8	-8.4	75.8	73.3	2,210.1	2,387.4	2,285.8	-4.3	2,467.8	
Sugar beet	32.0	48.5	38.6	-20.3	38.4	37.7	2,519.5	3,976.8	3,389.4	-14.8	3,700.5	
Cotton	63.5	58.1	66.8	14.9	74.5	74.0	145.4	83.3	173.0	107.6	226.2	
Sunflower	65.6	754.8	560.5	-25.7	781.4	769.8	1,038.1	862.9	923.4	7.0	979.5	
Alfalfa	248.8	244.5	256.9	5.1	246.4	246.9	10,806.5	11,107.1	10,874.5	-2.1	10,222.2	9,475.1
Vegetables	349.0	398.8	349.4	-12.4	480.8		13,201.0	13,924.8	13,152.2	-5.5	16,573.9	
Apple tree	30.8	32.6	29.7	-9.0			546.0	636.6	565.8	-11.1	625.4	
Pear tree	24.2	28.1	24.1	-14.3			425.6	493.1	445.1	-9.7	410.1	
Apricot tree	20.3	19.1	17.5	-8.0			131.8	94.5	112.0	18.5	138.7	152.8
Peach tree	84.4	76.9	57.5	-25.2			1,329.8	941.8	956.6	1.6	1,061.3	961.9
Almond tree	534.1	547.1	514.9	-5.9			143.1	224.2	188.8	-15.8	198.7	209.4
Orange tree	150.2	153.3	143.0	-6.7			3,536.7	3,064.8	3,099.3	1.1	3,305.4	
Mandarin	114.1	119.8	109.0	-9.1			2,198.9	2,141.6	2,062.4	-3.7	2,146.9	
Vineyard for table grapes	13.7	17.2	14.0	-18.8			254.3	255.6	244.7	-4.2	228.9	
Vineyard (For processing)	930.8	1,034.8	903.0	-12.7			7,482.5	5,614.3	6,048.3	7.7	6,002.3	
Wine+grape must. '000 hl							46,078.5	41,475.1	40,022.3	-3.5	44,306.7	
Olive tree for olive oil	2,343.2	2,290.2	2,289.6	0.0			1,765.2	1,274.6	1,328.5	4.2	836.4	
Olive tree for table olive	163.8	168.4	163.2	-3.1			463.8	467.1	464.4	-0.6	542.2	

(p): Provisional / (a): preview

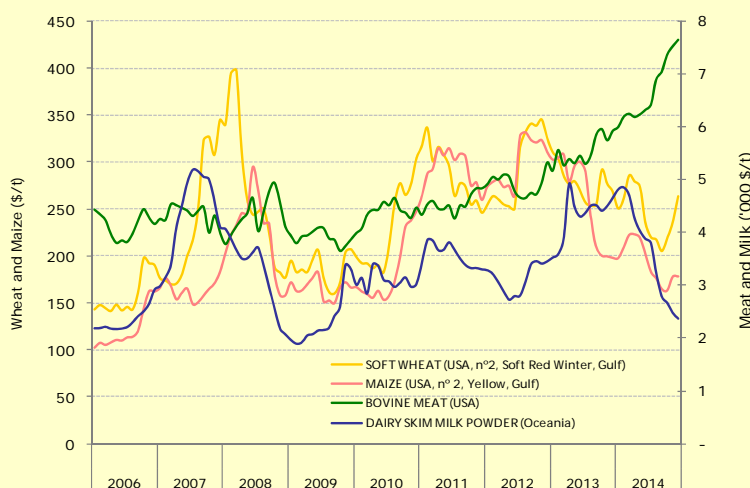
	Number of heads (thousand)						Annual Animal Slaughter (tons) Milk production ('000 t.) and eggs ('000 dozen)					
	Yearbook					Var. (%) B / A	Annual data					
	2012	2013	Var. (%) 13 / 12	A=Average 08 - 10	B=Average 11 - 13		2013	2014	Var. (%) 13 / 14	A=Average 09 - 11	B=Average 12 - 14	Var. (%) B / A
Cattle	5,813	5,697	-2.0	6,059	5,811	-4.1	580,840	577,264	-0.6	603,044	583,141	-3.3
Dairy cows / milk collected	827	857	3.6	854	827	-3.1	5,898	5,886	-0.2	5,821	5,951	2.2
Sheep	16,339	16,119	-1.3	19,407	16,487	-15.0	118,261	112,463	-4.9	128,749	117,574	-8.7
Goats	2,637	2,610	-1.0	2,932	2,647	-9.7	8,939	8,621	-3.6	10,197	9,063	-11.1
Pigs	25,250	25,495	1.0	25,691	25,460	-0.9	3,431,219	3,598,298	4.9	3,376,278	3,498,613	3.6
Poultry (Broilers and others)	703,865	685,539	-2.6	688,468	697,710	1.3	1,342,578	1,486,164	10.7	1,346,568	1,404,329	4.3
Poultry (Laying hens) / Eggs	43,643	44,668	2.3	50,565	45,935	-9.2	982	not available	n.a.	1,097	967	-11.9

Data source: SG Statistics. Magrama. "Statistical yearbook 2014" and "Advanced report on Agricultural Areas and Production" (data extracted from these two sources are not directly comparable, as they include different crops). Monthly Statistics of milk collected (tonnes of milk). Monthly Statistical Bulletin (Slaughter survey). --- / n/d: Not Available

6. INTERNATIONAL MARKETS. High increase of the bovine meat international price in 2014, whereas maize and milk prices have a continuous fall. Soft wheat international price shows also a descending trend up to mid-2014, where it experiments an important increase. Both, Brent-oil price and euro-dollar exchange rate, deeply decrease in 2014.

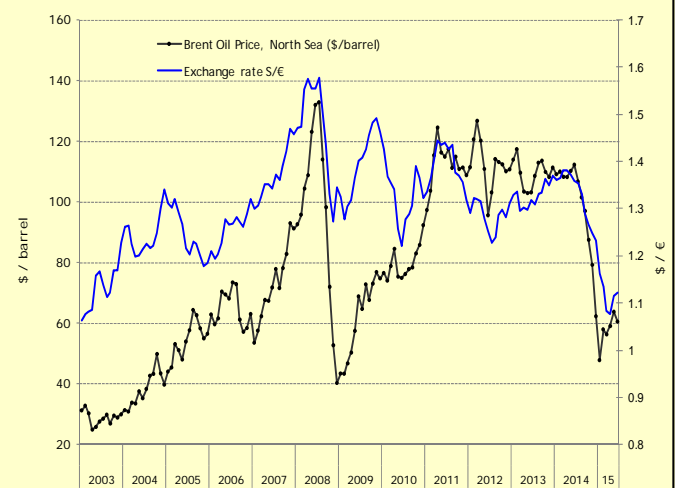
International Commodity Prices

Monthly average (\$/t.). Data Source: Commodity Prices FAO
<http://www.fao.org/es/esc/prices/PricesServlet.jsp?lang=en>



Exchange rate \$/€ and Crude Oil Price

Data source: BCE y MEH, SERSIE Series
<http://serviciosweb.meh.es/APPS/DGPE/sersie/sersie.aspx>



7. AGRICULTURAL POLICY AND FINANCING. European Agricultural Guarantee Fund (EAGF): In 2015, the expenditure incurred from EAGF in Spain is 5,645 million euro, 12.9% of the whole UE-28 budget for this fund. **Financing:** In 1st Q 2015, the total loan to primary sector was 16,350 million euro, 1.1% higher with respect to 2014; and the agro-food industry 19,164 million euro, 3.6% less than 2014.

EXPENSES AND BUDGET OF EAGF SPAIN AND EU Million euro	TOTAL EXPENDITURE						BUDGET		
	Budgetary year 2013			Budgetary year 2014			Budgetary year 2015		
	SPAIN	EU-28	% Spain/EU	SPAIN	EU-28	% Spain/EU	SPAIN	EU-28	% Spain/EU
CAP support	0.0	6.6	0.0%	0.0	7.9	0.0%			
Cereals	0.0	0.1	0.0%	0.0	2.4	0.0%			
Rice	0.0	0.0	0.0%	0.0	0.0	0.0%			
Restitutions for products out of annex I	0.0	4.9	0.0%	0.0	0.1	0.0%			
Food Aid Programmes	85.6	491.5	17.4%	0.0	-7.1	0.0%			
Sugar	0.0	-0.1	0.0%	0.0	0.4	0.0%			
Olive Oil	17.2	60.9	28.2%	0.0	43.1	0.0%	0.0	46.6	0.0%
Textiles Crops	6.1	17.1	35.6%	6.2	6.2	100.0%	6.1	6.2	98.9%
Fruits and Vegetables	183.4	1,138.1	16.1%	183.2	1,009.9	18.1%	205.5	836.2	24.6%
Viticulture Sector	210.1	1,044.2	20.1%	191.6	1,022.4	18.7%	210.3	1,095.0	19.2%
Promotion	5.2	51.5	10.1%	4.2	54.4	7.7%	4.5	65.3	7.0%
Other Plant Products	77.2	227.6	33.9%	83.1	240.6	34.5%	81.0	233.4	34.7%
Milk and Dairy Products	0.5	70.3	0.7%	0.4	71.8	0.6%	1.0	77.1	1.3%
Beef	0.2	6.5	3.1%	0.0	0.5	0.0%	0.0	0.1	0.0%
Other (pigs, eggs, poultry, beekeeping)	5.0	80.5	6.2%	3.6	33.0	10.9%	5.5	40.8	13.5%
Intervention in markets	590.6	3,193.2	18.5%	473.8	2,477.7	19.1%	514.0	2,400.7	21.4%
Decoupled direct aids	4,532.4	38,842.1	11.7%	4,449.2	38,952.6	11.4%	4,359.9	37,397.0	11.7%
Other direct aids	704.9	2,816.0	25.0%	657.0	2,707.1	24.3%	660.4	3,078.4	21.5%
Additional amounts of aid	0.0	0.0	0.0%	0.0	0.0	0.0%	110.5	868.2	12.7%
Direct Aids	5,237.2	41,658.3	12.6%	5,106.2	41,659.7	12.3%	5,130.8	41,343.6	12.4%
Rural development (before EAGGF's guarantee)	0.0	-1.0	0.0%	-0.1	26.3	-0.4%			
Audits	107.6	119.4	90.1%	2.3	118.5	1.9%			
CAP's coordination	0.0	26.3	0.0%	0.0	29.0	0.0%			
1st PILLAR of CAP	5,935.4	45,002.7	13.2%	5,582.2	44,291.5	12.6%	5,644.9	43,744.3	12.9%
Fishing	0.0	27.2	0.0%	0.0	0.0	0.0%			
Health y Consumer Protection	0.0	239.2	0.0%	0.0	0.0	0.0%			
TOTAL EXPENDITURES INCURRED BY EAGF	5,935.4	45,269.1	13.1%	5,582.2	44,291.5	12.6%	5,644.9	43,744.3	12.9%
Contributions, settlements and rates	-124.4	-829.0	15.0%	-94.1	-1,013.9	9.3%			
TOTAL EAGF	5,810.9	44,440.1	13.1%	5,488.1	43,277.6	12.7%			

FINANCING. Primary Sector & FBT Industry				
FIRST QUARTER 2015				
million euro	Difference (million €)		Variation (%)	
	Previous Quarter	Previous Year	Previous Quarter	Previous Year
Total Loans				
Total	675,779	1,697	-36,730	0.3
Primary ⁽¹⁾	16,350	241	184	1.5
FBTI ⁽²⁾	19,164	404	-715	2.2
Doubtful Loans				
Total	119,065	-5,542	-21,426	-4.4
Primary ⁽¹⁾	1,934	-43	-182	-2.2
FBTI ⁽²⁾	2,112	-64	-328	-2.9
Nonperforming loans (%)				
			Differential points	
Total	17.62	-0.87	-2.10	
Primary ⁽¹⁾	11.83	-0.44	-1.26	
FBTI ⁽²⁾	11.02	-0.58	-1.25	

Source: Bank of Spain

- (1) Includes agriculture, livestock, hunting and forestry. Fisheries and Aquaculture are not included.
 (2) Food, Beverages and Tobacco Industry

Budgetary year: Period between October 16th to October 15th of the next year.

Source: EAGF (European Agricultural Guarantee Fund), Ministry of Agriculture, Food and Environment.

8. AGRO-FOOD INDUSTRY. The main subsector of the Agro-Food Industry is the meat industry with 22,168 million euro turnover in 2013. It is followed by the Oils and fats industry, with 10,650 million euro, and the Pet food and Dairy Industries, with a turnover of 9,711 and 9,416 million euro respectively.

Food and Beverages Industry. Main indicators	Net Amount Turnover million euro			Value Added million euro			Employed people people		
	2013	2012	Variation 2013 / 12 (%)	2013	2012	Variation 2013 / 12 (%)	2013	2012	Variation 2013 / 12 (%)
Meat industry	22,167.8	21,506.2	3.1	3,534.4	3,579.2	-1.3	80,979	80,794	0.2
Fish industry	4,633.7	4,533.2	2.2	776.2	675.6	14.9	18,448	18,324	0.7
Proces./Preserv. Fruits and Vegetables	8,178.1	8,027.1	1.9	1,601.1	1,531.2	4.6	30,584	32,230	-5.1
Oils and fats	10,648.2	10,297.3	3.4	1,097.8	972.0	12.9	12,123	11,929	1.6
Dairy	9,416.4	9,764.8	-3.6	1,602.7	1,669.3	-4.0	24,480	25,452	-3.8
Milling, starch	3,720.5	3,582.9	3.8	469.6	496.4	-5.4	6,398	6,310	1.4
Bakery and pasta	7,475.0	7,185.0	4.0	2,469.8	2,323.0	6.3	80,532	76,385	5.4
Sugar, coffee, tea, infusions; pastisserie	3,663.1	3,544.2	3.4	942.8	937.6	0.6	14,952	14,220	5.1
Other foodstuffs	7,557.7	7,621.0	-0.8	1,735.7	1,780.8	-2.5	28,933	28,972	-0.1
Pet food	9,711.4	9,913.4	-2.0	844.0	989.1	-14.7	12,237	12,548	-2.5
Wine	6,720.6	6,467.6	3.9	1,594.0	1,627.8	-2.1	24,470	23,743	3.1
Alcoholic beverages distillation	4,500.5	4,478.8	0.5	1,375.8	1,393.5	-1.3	9,324	9,524	-2.1
Non-alcoholic beverages and mineral water	4,860.7	4,925.9	-1.3	984.1	1,023.5	-3.9	11,862	12,393	-4.3
FOOD AND BEVERAGES INDUSTRY	103,253.7	101,847.3	1.4	19,028.0	18,999.2	0.2	355,321	352,823	0.7
TOTAL INDUSTRY SECTOR	562,350.7	570,984.4	-1.5	124,468.3	125,416.7	-0.8	1,949,194	1,922,272	1.4

Source: Industrial Business Survey, INE

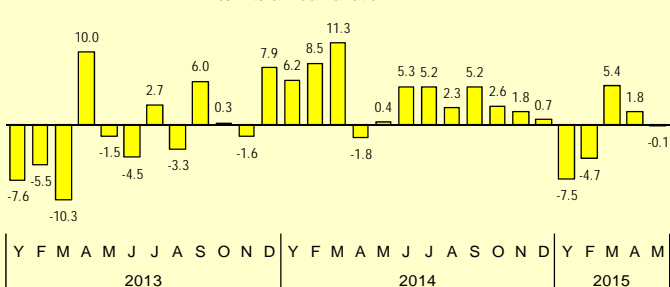
Definitions:

- **Turnover:** Comprises the totals invoiced during the reference period, and this corresponds to the total value of market sales of goods and services to third parties.

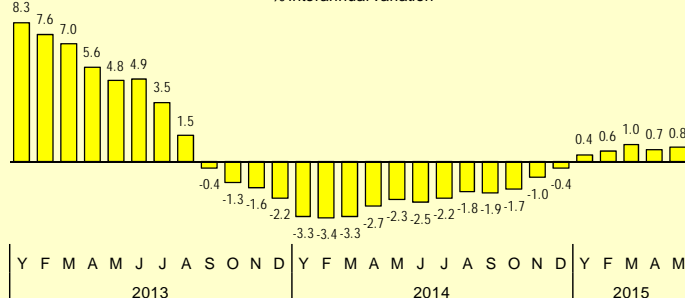
- **Value added:** Production value subtracted the total inputs required to carry it out.

- **Employed people:** Employed persons are understood to be the group of permanent and temporary employed persons who, during the reference year of the data, were carrying out paid or unpaid work for the company, and belonging to and being paid by said company. Persons with a leave of illness, paid holidays, unpaid occasional leave, etc., are included, as well as part-time workers (as long as they work more than 1/3 of the complete working day).

**Industrial Production Index (IPI)
FOOD INDUSTRY**
% interannual variation



**Industrial Producer Price Index (IPRI)
FOOD INDUSTRY**
% interannual variation



The industrial production index (abbreviated IPI and sometimes also called industrial output index or industrial volume index) is a business cycle indicator which measures monthly changes in the price-adjusted output of industry. Source: INE

The industrial producer price index measures the gross monthly change in the trading price of industrial products. The IPPI measures price changes from the point of view of the producers/manufacturers of a product. Source: INE

9. CONSUMPTION AND DISTRIBUTION. Panel: Food expenditure in april 2015 (Rolling Year) was 66,430 million euro, decreasing by 2.5% with respect to 2014. Agro-food trade: Tangible assets investments rose by 9.9% in 2013.

ANNUAL HOUSEHOLD FOOD EXPENDITURE					ANNUAL HOUSEHOLD FOOD CONSUMPTION						
Product selection	EXPENDITURE (million euro)			Per capita expenditure	% of Total Expend.	Product selection	QUANTITY (million kg. or liters)			kg/Lt per capita	% of Total consumption
	2015 RY april	2014 RY april	Variation 2015/14 (%)				2015 RY april	2014 RY april	Variation 2015/14 (%)		
Meat	14,656.8	14,975.6	-2.1	332.6	22.0%	Fresh fruits	4,549.1	4,652.4	-2.2	101.1	15.5%
Fishing	8,916.7	9,081.9	-1.8	201.7	13.3%	Milk	3,295.0	3,321.4	-0.8	73.2	11.0%
Fresh fruits	5,908.2	6,317.8	-6.5	140.3	9.3%	Fresh vegetables	2,717.7	2,862.6	-5.1	60.4	9.5%
Dairy products	5,757.5	5,781.1	-0.4	128.4	8.5%	Meat	2,274.6	2,347.2	-3.1	50.5	7.8%
Fresh vegetables	4,318.7	4,507.8	-4.2	100.1	6.6%	Dairy products	1,737.7	1,742.9	-0.3	38.6	5.8%
Bread	3,816.6	3,872.8	-1.5	86.0	5.7%	Bread	1,587.4	1,665.4	-4.7	35.2	5.5%
Milk	2,359.1	2,358.7	0.0	52.4	3.5%	Fishing	1,171.0	1,211.2	-3.3	26.0	4.0%
Olive oil	1,091.8	1,279.8	-14.7	28.4	1.9%	Fresh potatoes	1,009.4	1,035.9	-2.6	22.4	3.4%
Eggs	818.2	865.8	-5.5	19.2	1.3%	Olive oil	388.7	430.6	-9.7	8.6	1.4%
Fresh potatoes	608.7	815.8	-25.4	18.1	1.2%	Eggs ('000 kg)	377.9	386.4	-2.2	8.4	1.3%
Wine D.O. (*)	no data	no data				Table wine	no data	no data			
Table wine	no data	no data				Sunflower oil	142.1	153.5	-7.4	3.2	0.5%
Legumes	234.7	248.3	-5.5	5.5	0.4%	Legumes	139.1	146.4	-5.0	3.1	0.5%
Sunflower oil	169.5	195.4	-13.3	4.3	0.3%	Wine D.O. (*)	no data	no data			
TOTAL EXPENDITURE	66,430.8	68,159.6	-2.5	1,475.3	100.0%	TOTAL QUANTITY	29,504.2	30,079.2	-1.9	655.3	100.0%

Distribution of household food consumption. Spain						
Market share (volume) and volume consumption evolution (kg./litres)						
Period: RY april 2015	TOTAL		FRESH		REST	
	Market share (%)	Interannual variation (%)	Market share (%)	Interannual variation (%)	Market share (%)	Interannual variation (%)
Hypermarkets	14.1	-2.6	8.2	-3.4	18.3	-2.3
Supermarket + Self-service	43.5	-0.3	31.3	-0.9	52.2	-0.1
Discount stores	15.6	0.8	9.1	9.7	20.3	-1.8
Traditional stores	16.7	-9.4	35.8	-9.2	2.8	-11.3
Other channels of which, internet	10.2	1.6	15.6	-0.3	6.3	5.3
		33.8		54.6		30.1
TOTAL SPAIN	100.0	-1.9	100.0		100.0	-0.9

ANNUAL TRADE SURVEY 2013 Agro-Food Trade	Output value		Net purchases in goods & services		Net purchases in goods & services for resale		Tangible assets investments	
	mill.€	% 13/12	mill.€	% 13/12	mill.€	% 13/12	mill.€	% 13/12
NACE								
4611 Agents	47.3	8.7	19.2	-6.3	4.4	-6.4	0.5	66.7
462 Wholesale Agriculture	2,693	4.7	20,283	-0.7	18,798	-1.5	182	8.8
463 Wholesale Food, Bev. & Tob.	22,394	1.5	93,819	1.8	81,945	1.9	1,285	2.4
472 Retail in specialised stores	6,156	-0.9	18,670	-0.7	16,660	-0.9	101	-2.5
4711 Retail in Super/Hipermarkets	17,993	0.1	61,103	-0.5	54,813	-0.4	1,593	17.8
Total Agro-food trade (aprox.)	49,283	0.9	193,893	0.6	172,220	0.5	3,162	9.9
Total trade Sector	164,776	-1.5	537,288	-1.0	464,243	-0.9	8,413	-1.6

(*) Wine D.O = Wine with Designation of Origin. Liquor, cava or champagne are not included.
RY = Rolling Year (previous 12 months)
Data source: Household expenditure and consumption. Consumption Report (MAGRAMA)

Data source: Annual Trade Survey 2013, INE.
Note: 4611: Intermediaries involved in the trade of agricultural raw materials, live animals, textile raw materials and semi-finished goods. 462: Wholesale of agricultural raw materials and live animals. 463: Wholesale of food, beverages and tobacco. 472: In specialised stores (groceries, fruit shops, etc.). 4711: Retail sale in non-specialised stores with food, beverages or tobacco predominating

10. FISHERIES AND AQUACULTURE. The economic value of total catches by Spanish fishing boats in 2013 was 2,165 million euro. The output value of aquaculture in 2013 was 431.9 million euro, -0.9% with respect to 2012.

TOTAL CATCHES by spanish fishing boats, 2013	VALUE ('000 euro)	Aquaculture Output value	Groups of species	2013 thousand euros	Variation 2013/12 (%)	Average 2009-2013		
European eel	2,739	SEA FARMING	Seawater	Fish	276,570	6.9	252,976	
Sole, Flounder, Halibut	58,258			Crustaceans	60	-93.4	864	
Cod, Hake	337,467			Molluscs	85,445	-20.4	104,938	
Miscellaneous coastal fishes	179,800			Other invertebrates	4	255.0	2	
Miscellaneous demersal fishes	129,455			Aquatic plants	756	8.0	681	
Herring, Sardine, Anchovy	137,047			Subtotal	362,834	-1.3	359,461	
Tuna, Bonito	717,540		Intertide salted water zone	Fish	9,078	-33.5	12,800	
Miscellaneous pelagic fishes	89,469			Crustaceans	168	-50.3	233	
Shark	95,741			Molluscs	12,094	39.3	11,413	
Total fish	1,785,960			Subtotal	21,340	-5.9	24,445	
Crab	6,640		Total	Fish	285,648	4.9	265,776	
Lobster	14,814			Crustaceans	228	-81.6	1,096	
Shrimp, Prawn	108,829			Molluscs	97,539	-15.9	116,351	
Other	10,555			Other invertebrates	4	255.0	2	
Total Crustacean	140,882			Aquatic plants	756	8.0	681	
Abalone, winkle	820		INLAND FARMING	Inland	Fish	47,686	5.1	50,184
Oyster	138				Crustaceans	27	128.8	10
Mussel	168			Subtotal	47,713	5.2	50,194	
Scallop	953	TOTAL	TOTAL	Fish	333,335	4.9	315,960	
Clam	55,038			Crustaceans	255	-79.6	1,106	
Squid, octopus	178,949			Molluscs	97,539	-15.9	116,351	
Total Mollusc	236,174			Other invertebrates	4	255.0	2	
Total Catches	2,165,362			Aquatic plants	756	8.0	681	
				Total	431,887	-0.9	434,100	

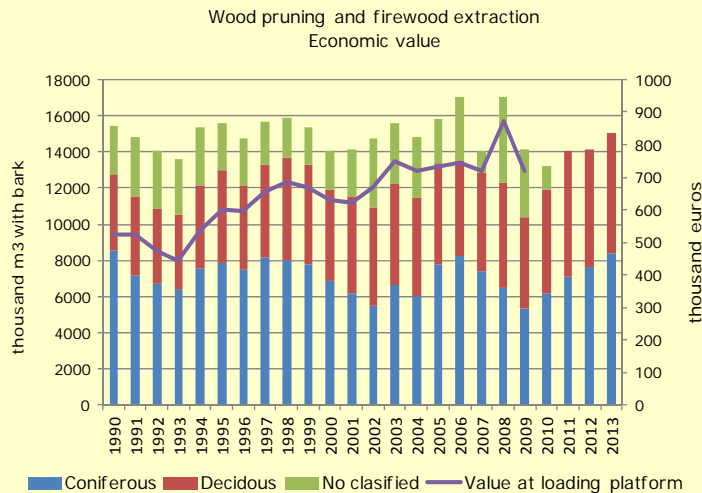
Source: S.G. Statistics. MAGRAMA

11. RURAL AREAS. Standard output of the agricultural holdings of Andalucia Region was 8,114 million euro, the 22.5% of the Spanish agricultural holdings total output. Drip irrigation accounts for 48.7% of the total irrigated area.

Farm Structure	FARM STRUCTURE SURVEY, 2013							CAYS, 2014	
	Number of agricultural holdings	Number of agricultural holdings with UAA	UAA (ha)	Average UAA (ha)	Livestock Units	Standard Output (thousand euros)	AWU	Total (ha)	Drip irrigation (ha)
Andalucía	244,566	241,068	4,368,998	18.12	1,580,548	8,114,145	242,244	1,048,240	776,391
Aragón	50,190	48,760	2,261,685	46.38	1,905,178	3,260,779	39,463	394,426	55,377
Asturias	23,464	22,287	336,312	15.09	321,052	449,177	20,243	622	196
I. Baleares	10,339	10,167	176,280	17.34	80,587	249,622	7,510	19,162	9,614
I. Canarias	13,218	12,198	52,209	4.28	83,423	585,158	21,987	24,430	17,689
Cantabria	10,140	9,208	222,947	24.21	248,319	306,760	8,801	307	8
Cataluña	59,097	57,299	1,125,268	19.64	2,683,236	4,245,915	56,045	251,070	86,858
Castilla y León	93,343	89,912	5,295,684	58.9	2,196,654	4,640,736	67,360	441,348	23,947
Castilla - La Mancha	119,883	118,070	4,045,815	34.27	1,166,844	3,318,935	75,346	504,441	284,041
C. Valenciana	118,128	117,320	637,754	5.44	527,691	2,410,002	63,486	285,701	192,267
Extremadura	64,279	63,058	2,491,728	39.51	1,171,960	2,117,774	55,070	259,080	112,871
Galicia	79,321	77,661	655,519	8.44	1,265,008	2,309,101	76,899	17,720	739
La Rioja	9,727	9,417	215,835	22.92	112,801	463,572	8,286	52,925	20,303
C. de Madrid	7,878	7,650	304,150	39.76	111,100	226,246	5,720	18,429	1,996
Región de Murcia	30,618	29,867	375,863	12.58	529,506	1,951,331	40,491	184,575	152,919
C. Foral de Navarra	14,960	14,553	546,893	37.58	347,641	923,167	11,318	95,960	19,160
País Vasco	15,843	15,805	187,251	11.85	169,619	406,610	13,276	6,685	1,761
TOTAL SPAIN	965,002	944,305	23,300,221	24.67	14,501,209	35,979,146	813,551	3,605,121	1,756,138

Data source: Farm Structure Survey , INE
CAYS: Crops Area and Yield Survey. Sectorial Report : Analysis of the Spanish irrigation area. MAGRAMA 2014

12. FORESTRY AND WOOD INDUSTRY. Wood pruning and firewood extraction in 2015 was 15.1 million m³, following an increasing trend begun in 2010. In 1st Q 2015, Manufacture of Wood and Cork employed 126,500 people.



Source: Agricultural yearbook, Ministry of Agriculture, Food and Environment

Labour Force Survey
Forestry & Logging + Wood & Paper Manufacturing industry (NACE 02+16+17)

thousand people	Average 2008 to 2013	2013	2014	Var.(%) 2014/13	First Quarter 2015
Forestry & Logging (NACE 02)					
Active	38.0	31.8	33.5	5.4	35.7
Employed	29.4	23.4	24.8	6.1	25.9
Unemployed	8.6	8.4	8.7	3.6	9.8
% Employed / Primary Sector	3.8	3.2	3.4	0.2	3.6
Manufacture of wood & cork (NACE 16)					
Activa	81.7	60.2	56.6	-5.9	55.1
Employed	72.9	52.6	51.4	-2.2	50.9
Unemployed	8.9	7.6	5.2	-31.8	4.2
% Employed / Industrial Sector	3.0	2.5	2.4	-0.1	2.3
Manufacture of paper (NACE 17)					
Activa	48.5	47.7	48.9	2.5	52.2
Employed	44.0	44.4	45.5	2.5	49.7
Unemployed	4.5	3.3	3.4	2.3	2.5
% Employed / Industrial Sector	1.8	2.1	2.1	0.0	2.3

Source: Labour Force Survey, Spain, INE

The variations between two percentages are expressed in differential points

The LFS only classifies into a specific economic sector to unemployed people which have leaved their job since 12 months or less. Therefore, sectorial unemployment rates are not comparable to general unemployment rate.

13. ENVIRONMENT

	Units	2006	2007	2008	2009	2010	2011	2012	2013	2014	2015	
WATER												
Average annual rainfall: Spanish peninsula	l/m ²	669	608	579	662	789	542	535	717	680.0	269.0	30 june 2015
Total water. Reservoir stocks (December)	hm ³	30.089	22.466	25.915	31.945	41.427	34.536	30.872	36.912	41.881	39.301	6 july 2015
% water stocks with respect to total capacity (1)	%	55,6	41,5	47,7	58	74,5	62,1	55,8	66,7	75,7	70,2	6 july 2015
Water distributed for consumption	hm ³	3.913	3.778	3.732	3.501	3.393	3.381	3.338				
Water used for irrigation in agricultural sector	hm ³	15.865	16.211	15.314	15.910	16.118	16.344	15.833				
CLIMATE CHANGE												
Greenhouse gas emissions (2)	Kt CO ₂	429.886	438.275	404.681	366.096	353.590	352.122	346.203	319.671			
Greenhouse gas emissions /1990 (3)	%	49,2	52,1	40,4	27,0	22,7	22,2	20,1	10,9			
Greenhouse gas emission allowances. Price. (EUA) (4)	€/t CO ₂	---	---	22,2	13,1	14,3	12,8	7,3	4,5	7,0	7,5	30 june 2015
Price of carbon credits (4)	€/t CO ₂	---	---	19,7	12,5	12,6	9,9	3,0	0,4	0,0	0,4	"
Electricity production from renewable energy sources	GWh	56.127	62.158	63.947	74.675	98.529	88.225	88.264	113.136	136.624	68.636	"
Electricity production from hydraulic energy	GWh	25.400	30.351	25.876	29.321	31.797	32.779	24.125	40.988	42.927	19.360	"
Electricity production from wind power	GWh	22.632	25.861	31.394	36.188	43.088	42.224	48.134	54.580	50.630	27.314	"
Electricity net generation (5)	GWh	261.986	271.442	278.107	263.258	273.337	264.936	268.616	260.395	253.564	127.886	"
Renewable energy consumption (% s/ primary energy)	%	6,4	6,8	7,4	9,4	11,6	11,3	12,3	15,5	14,6		24 june 2015
Biofuel consumption (Until 2006, ktep)	thousand t.	562	491	727	1.265	1.711	1.989	2.269	1.128	1.103	102	may 2015
BIODIVERSITY												
Natura 2000 network and nature protected areas (marine and earth)	thousand ha	-	14.376	14.602	15.071	15.090	15.173	15.178	15.190	---		---
Natura 2000 network + nature protected areas/ Total Spain Area (%)	%	-	26,8	27,2	27,7	27,7	27,8	27,9	27,9	---		---
Total forest area burnt by fire	hectares	155.345	86.122	50.322	120.094	54.770	84.490	209.855	55.686	46.721	24.325	5 july 2015
% Burnt forest area by forest fires	%	0,562	0,311	0,182	0,434	0,198	0,305	0,759	0,202	0,17	0,088	5 july 2015
WASTE GENERATION												
Municipal waste. Year	kg/habitant	594	583	556	547	535	531	464,0				---
Total waste. Year	thousand t	26.209	26.238	26.030	25.108	23.774	22.997	21.678				---

Data Sources:

Compiled by the authors from SG Statistics, MAGRAMA, Hydrological Bulletin by MAGRAMA, INE (Environmental Profile of Spain), Red Eléctrica de España, S.A, State Meteorology Agency (AEMET), European Environment Agency, S.G. Biodiversity, Institute for Energy Diversification and Saving (IDAE), Corporation of Strategic Reserves of Oil-based products

- (1) Percentage of total capacity
 - (2) GHG inventory, MAGRAMA
 - (3) 1990, Kyoto Protocol base year (289.773 kt CO₂)
 - (4) Prices in SENDECO2 (30-days average)
 - (5) Net generation: Energy production from alternator terminals, except the energy consumed by auxiliary services and energy losses in transformers
- : Data not available

Other publications of "Análisis y Prospectiva"

Análisis y Prospectiva—Serie Empleo. http://www.magrama.gob.es/es/ministerio/servicios/analisis-y-prospectiva/AyP_serie_Empleo.aspx

Análisis y Prospectiva—Serie Territorial. http://www.magrama.gob.es/es/ministerio/servicios/analisis-y-prospectiva/AyP_serie_Territorial.aspx

Análisis y Prospectiva—Análisis del Comercio Exterior. http://www.magrama.gob.es/es/ministerio/servicios/analisis-y-prospectiva/Comercio_exterior.aspx