



Guide to the
Nature Trails
of Spain



SECTOR
NORTHEASTERN PENINSULAR



A SPECTACULAR ROUTE THROUGH THE SIERRA DE GUARA

The Huesca region of El Somontano is one of the destinations most frequented by tourists in Aragón. Rich in cultural and natural heritage, it offers you the chance to enjoy beautiful landscapes and to practice a diverse array of sports, ranging from fishing and horse-riding to climbing and canyoning in the Sierra de Guara. It houses the almost 55 kilometres of the El Somontano Nature Trail, one of the most appealing routes for long-haul trekking enthusiasts.

This itinerary, that is perfectly signposted and restored, links the most spectacular spots of the Sierra de Guara together. It can be completed in different stages in journey style or in short go and return sections. Its route is also suited to different trekking modalities, ranging from the recreational and the educational to the sporting. Thanks to the good weather of the region, the route is accessible the whole year round.



Since 1993 the Ministry for Agriculture and Fisheries, Food and the Environment's Nature Trails Program aims to restore former transport infrastructures such as railway tracks, cattle trails and traditional routes, for public use and enjoyment.

These routes take us to the countryside to discover the biodiversity and beauty of our precious natural heritage, and discover the villages, sights, traditions and people that are part of the unique cultural landscape of our country.

We invite you to visit them and offer you the keys to enjoy the trip. In this brochure you will find a brief description of the Somontano de Barbastro Nature Trail and the map for the journey, along with recommendations to make the most of this experience. We only ask one thing of you: do not forget to leave everything as you found it. The conservation of these pathways is also your responsibility.

TELEPHONES OF INTEREST:

- Alquézar tourism office : 0034 974 31 89 40
- Barbastro tourism office: 0034 974 30 83 50

DE

NPO

SECTOR NORTHEASTERN PENINSULAR NATURE TRAIL SOMONTANO DE BARBASTRO

1a. The route begins in Alquézar, descending towards the ravine of Poyuela, as far as the Chapel of San Gregorio, where there is a recreational area. From a fork further on, it is possible to continue towards Radiquero, but in order to complete this first, circular stage, you must take a track that will lead you to the Balsas de Basacol, a recreational area created around two pools which, in bygone days, used to supply the town of Alquézar. Leaving the Balsas de Basacol behind, you head along a path that descends to the River Vero across the medieval bridge of Villacantal. The route then continues very close to the riverbed of the Lumos ravine, ascending to the town of Asque.

1b. From Asque, you can reach Colungo. Asque es possible acceder a Colungo, crossing over las Gargantas ravine by means of "el puente del Diablo" (Devil's bridge) and passing the Los Pílonas ravine..

1c. Back in Asque, the route continues along a path that overlaps GR-1 route for a stretch. A track descends to the course of the River Vero, which you can cross via the Fuendebaños bridge, a 10th-century medieval work, where the ascent to Alquézar begins. Once again in Alquézar, you can complete the route by visiting the Collegiate Church of Santa María la Mayor and the castle.

2. Should you wish to cover the entire Nature Trail, the route continues from the fork near the Chapel of San

Gregorio, following a track which heads towards San Pelegrín and then descends to Radiquero. After crossing this village, the route continues along a track that leads you to the fields of the broad valley of the Arnals ravine and ascends to the vicinity of the ruins of the Chapel of Santa Águeda: which is worth a visit on account of the impressive views offered by this point over the valley.

3. Once at the basin of the ravine of Modovil, and after crossing it, the trail begins to gain height until it reaches the watershed of two basins, near the Chapel of the Virgen de La Viña. In the vicinity of the chapel, a recreational area with a great view of the gorges of Balced and the peaks of Guara has been outfitted.

4. Leaving behind this branch of the trail, it continues half-slope along the hills to Corral Nuevo, passing by curious geological formations like Las Palomeras or Canales de Adahuesca, until it reaches the passage of el Barranco del Cauticho, which the trail crosses through the Witches' bridge. A new way of crossing has been enabled, but the former can still be seen. In the next stretch, provided with a wooden balustrade system and rope fences for safety, the Trail reaches the Balces River and crosses it at Tranco de las Olas, to ascend afterwards toward the Collado de las Almunias. The trail continues until reaching the village of Las Almunias de Rodellar.

5. From this location, the trail leads to the ancient Pasaderas de Pedruei, large stones that allow crossing the Alcanadre without getting wet. Arriving at Pedruei the trail follows the old road to descend into the canyon of Alcanadre through a stretch called La Peonera. Along the way, several detours to the remains left of Castle Naya and to Fuente Gütega are left behind. The trail finally reaches a lookout that offers a fabulous view of the surrounding mountains and the canyon of Alcanadre.

6. The trail goes past a detour to the shrine of San Martín, heading to the pine forest of Morrano, and passing under another geological formation, an impressive rocky overhang named "El Huevo de Morrano". The trail descends again into the Alcanadre River, near Fuente de La Tamara nearby a resting area that receives large crowds in summer, since its location coincides with the end of the canyon of la Peonera.

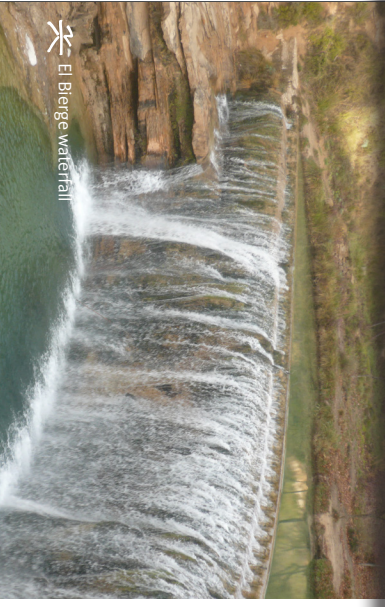
7. You cross the Tamara ravine from where you will be able to access the Fuente de Puntillo, a succession of small, eye-catching waterfalls. You must leave the track at the signposted point to then go to El Salto de Bierge, a water ravine where the spectacular itinerary of El Somontano Nature Trail comes to an end.



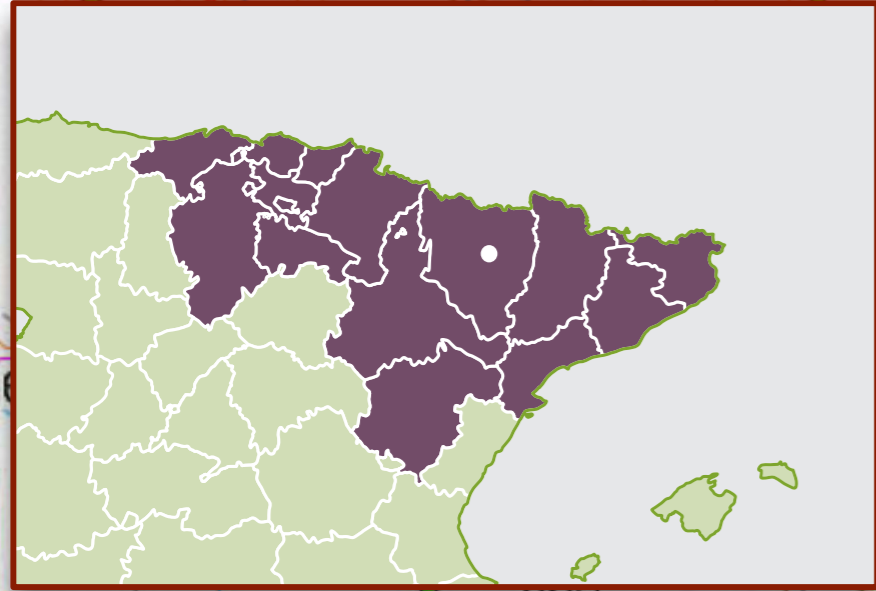
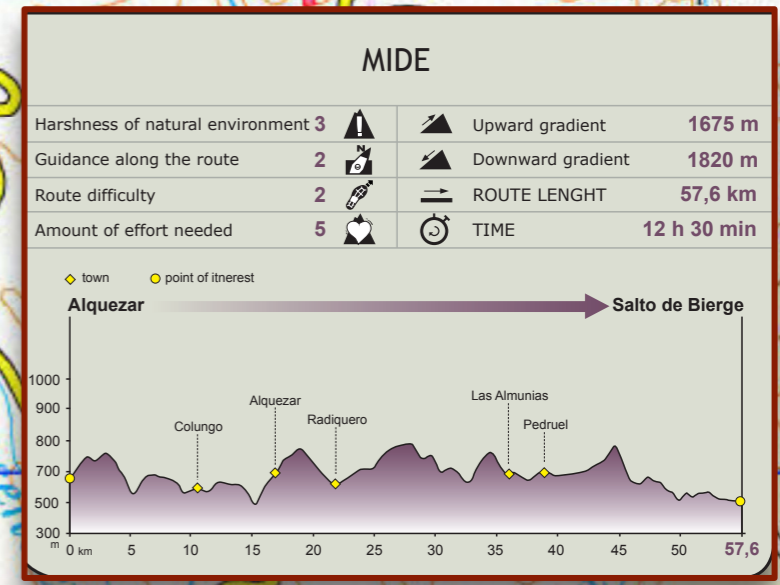
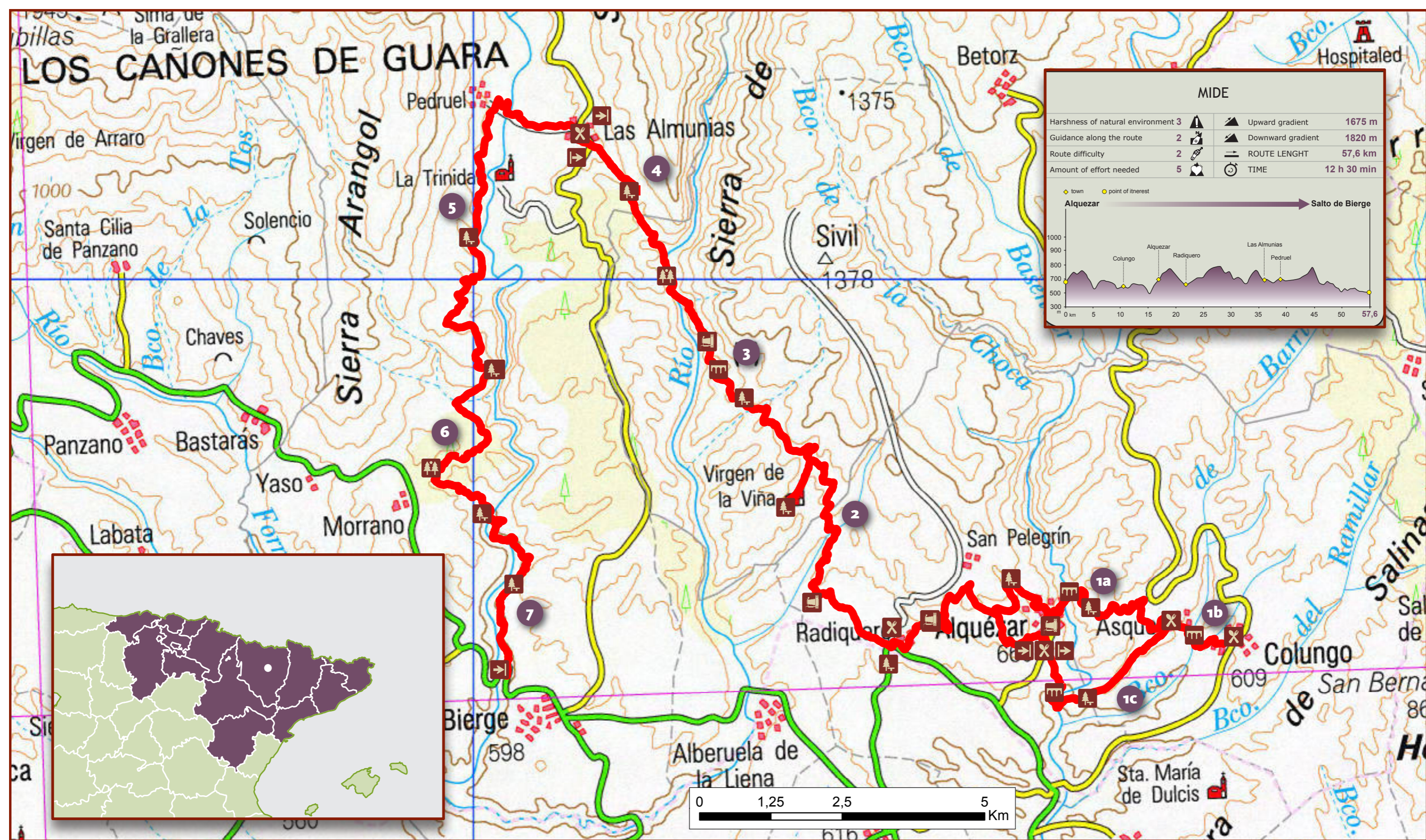
Puente del Diablo (Devil's Bridge)



Alquézar



El Bierge waterfall



SECTOR
NORTHEASTERN PENINSULAR



**NATURE TRAIL
SOMONTANO DE
BARBASTRO**

- Stage starting point
- Feature of environmental interest
- Meals
- End of stage
- Bridge
- Viewpoint
- Rest area