

NATURE TRAIL TAJO RIVER



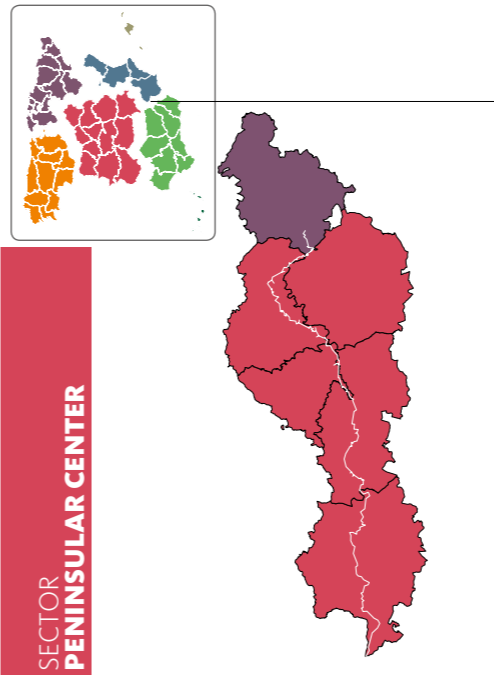
Guide to the
Nature Trails
of Spain

SECTOR PENINSULAR CENTER NATURE TRAIL TAJO RIVER

1. The trail starts at the province of Teruel, in Albarraçin, few kilometres away from the headwater of the river. Travelling across mountain forests and croplands, it crosses Villar del Cobo and reaches the shrine of San Lorenzo.
2. **FROM THE SHRINE OF SAN LORENZO TO ESTREMEIRA**
Once in Guadalajara, the trail goes across the gorges of river Tajo. In the Alto Tajo Nature Park, going along Perales de las Truchas, Poveda and Zaorejas. Plunging into forested areas amongst pines and junipers, the trail reaches Villar de Cobeta, where pines are replaced by oaks as the trail descends towards the plateau, heading to Huertapeñayo. In this stretch, the Cistercian Monastery of Buenafuente del Sístal is noteworthy.
3. The trail then continues amongst oaks and vegetable gardens, taking the traveller through Valtabado del Río until Trillo, coming close to the Entrepeñas reservoir. The route follows through crop areas until the Bolarque waterfall, and it reaches Zorita de los Canes, where you can visit the Visigoth ruins of Recópolis. The agrarian landscape until Estremera is dominated by cereal lands irrigated by the Almoguera or Estremera reservoirs.
4. **FROM ESTREMEIRA TO VILLAMEJOR**
Estremera is the first town in the Community of Madrid. The stretch that goes from Villamanrique de Tajo to Colmenar de Oreja goes along abandoned quarries and modern extracting

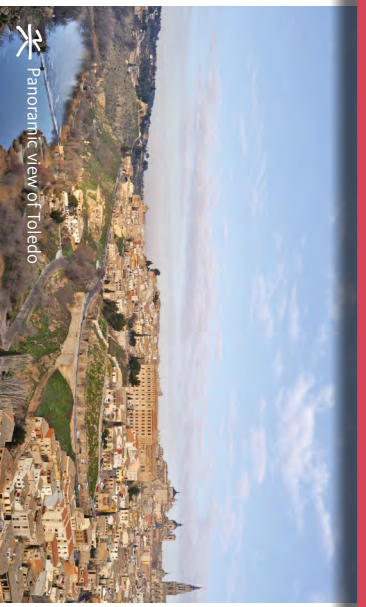


Walkway in Taravilla



SECTOR PENINSULAR CENTER

- exploitations. When you arrive in Colmenar, you will see the beautiful valley of Valdegrederos. Until it reaches Aranjuez, the route descends to meet the Tajo in its way to Real Sitio y Villa de Aranjuez, city that has been declared World Heritage, with a great historical-cultural site. The trail then goes back to the meanders of the Tajo until it reaches Villamejor.
5. **FROM VILLAMEJOR TO PUENTE DEL ARZOBISPO**
The trail runs along Castilla-La Mancha once again, and it reaches Toledo, declared World Heritage. In this city, the three monotheist religions are represented – Muslim, Jew and Christian – in different forms of art: architecture, culture, art and gastronomy. The trail takes the traveller, through olive groves and fields of cereal, to Albarreal de Tajo. The river Tajo passing on the route towards La Puebla de Montalbán, through the Barrancas Ravine and the Castrejón reservoir, offers one of the most spectacular landscapes that can be seen from the trail. The itinerary runs among the Castrejón and the Carpio reservoirs until it reaches Malpica de Tajo. On your way, you can visit castles, shrines and the Las Tamiujas archaeological site, at the entrance of the town of Malpica de Tajo.
 6. Starting from Malpica, the trail continues through field crops, passing the towns of Talavera de la Reina and Calera y Chozas. The stretch between Calera and Aldeanueva de Barbarroja coincides with the Jara Nature Trail, leading towards the Azután reservoir along the tracks of an old railway line. The trail descends towards the flood meadows of the Tajo on its way towards El Puente del Arzobispo, running along part of the Roman road of river Uso and the Azután dam and reservoir.
 7. **FROM PUENTE DEL ARZOBISPO TO CEDILLO**
The route continues through farmlands, olive groves and hunting preserves, and it crosses Valdehacasa de Tajo and



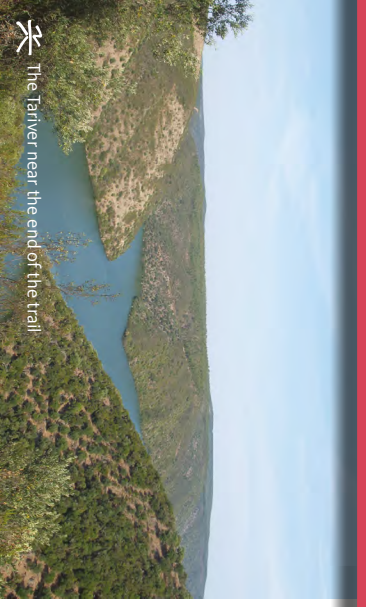
Panoramic view of Toledo



ALONG THE IMPERIAL RIVER

The trail goes along one of the most valued rivers on the Iberian Peninsula, the Tajo. This river shows the traveller the wonders of the peninsular nature, as well as the most emblematic corners of a country that reflects great part of its history and culture in its waters.

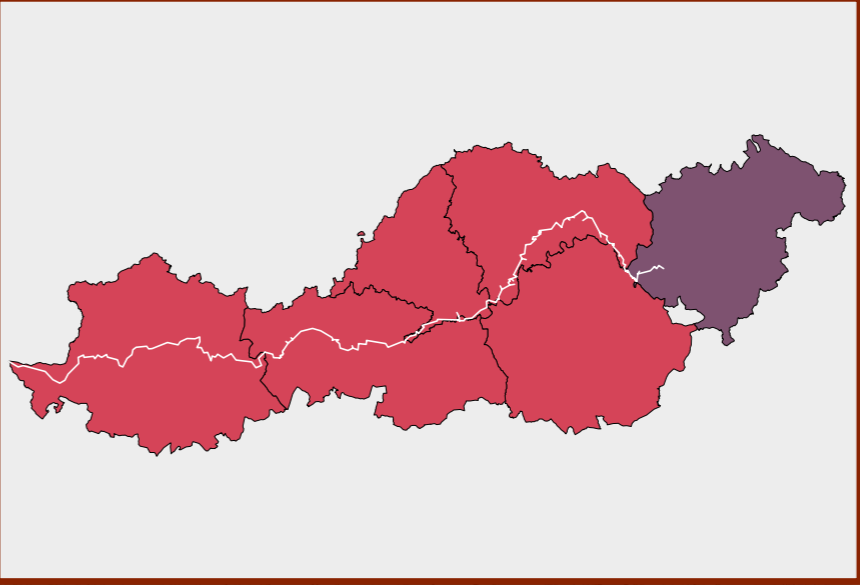
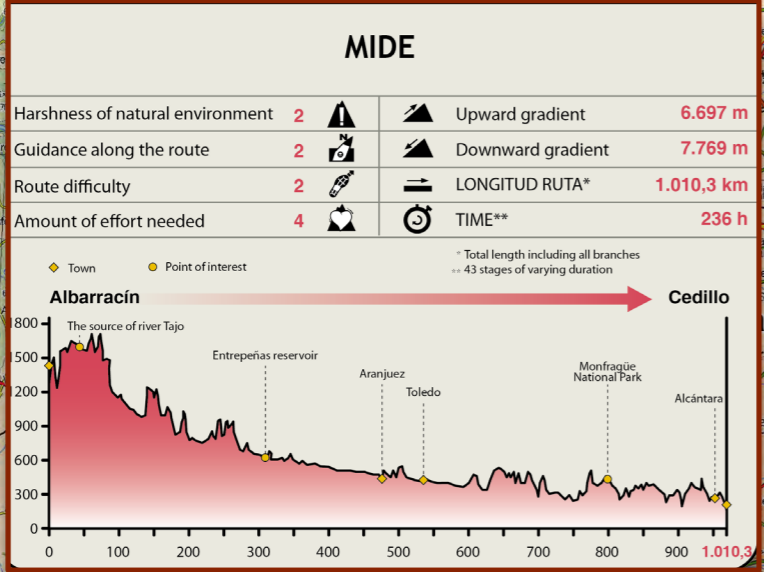
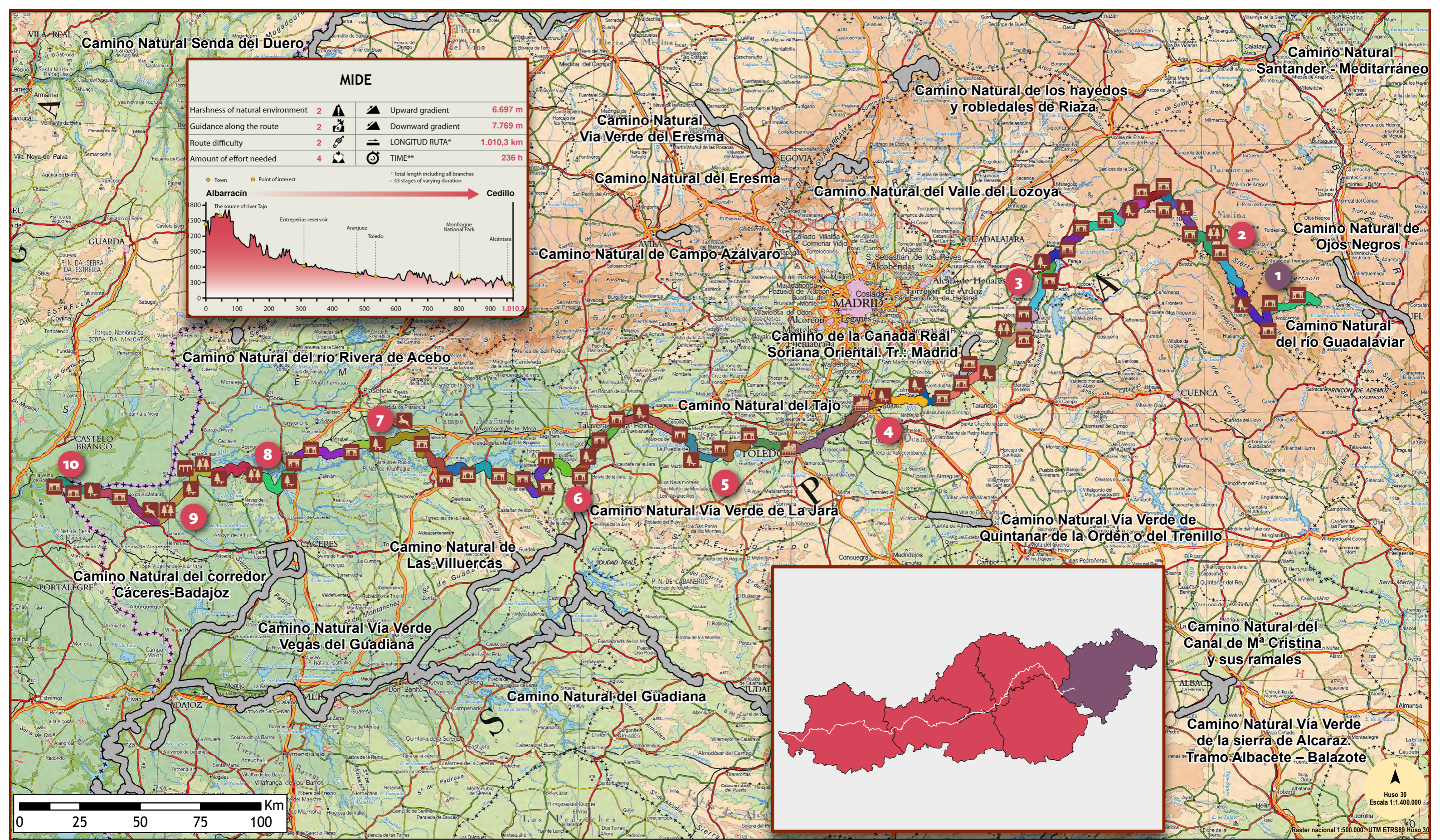
8. *(You need to apply for a free permit online or at the offices of the Park in order to circulate through the Monfragüe National Park).*
From Villarreal until Serradilla, the route leaves the National Park behind, continuing through pastures until Cañaveral. The trail from Cañaveral to Garrovillas de Alconétar goes across varied landscapes, from the steppes and pastures to the lovely picture of the Tajo riverbanks, dammed by the Alcántara reservoir. During the itinerary towards Mata de Alcántara, it is worth mentioning the Garrovillas pine grove, the steppe areas and the oak forests. From Mata de Alcántara you get to Alcántara, a city whose strategic location has conditioned its historic evolution, as shown by many of its monuments and architecture (especially the representation of Roman engineering, like the famous Alcántara bridge).
9. Between Alcántara and Membrijo, entering the International Tajo Nature Park, the trail leads to Llanos de Brozas and Llanos de Alcántara, included in the Natura 2000 network. Until Santiago de Alcántara, the trail continues along Sierra de San Pedro, which houses 15% of the world's population of the imperial eagle.
10. Until Herrera de Alcántara, the trail continues along the Aurela Riverbank, where the presence of cork groves, oak groves and riparian galleries are worth mentioning. After that, the traveller will get to Cedilla, which has a very abrupt orography, very beautiful due to its rivers, brooks and riverbanks. This way, you will find the end of this nature trail.



The Tánver near the end of the trail

FOR MORE INFORMATION:
<http://www.magrama.gob.es/es/desarrollo-rural/temas/caminos-naturales>

DE
NPO



SECTOR PENINSULAR CENTER



NATURE TRAIL
TAJO RIVER

- Starting point
- End of trail
- Rest area
- Bridge
- Monument
- Monumental area
- Feature of environmental interest
- Natural/National Park