

NATURE TRAIL GUADIANA



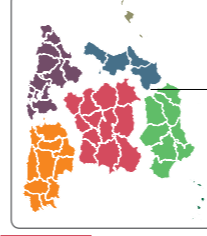
Guide to the
Nature Trails
of Spain

SECTOR PENINSULAR CENTER NATURE TRAIL GUADIANA

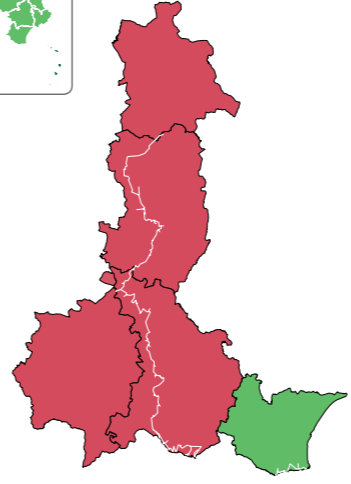
- Stages 1 and 2.** The trail, approximately 1,000 kilometres long, begins at Laguna Blanca, in the Lagunas de Ruidera Natural Park, and continues on the left bank of the Penarroya reservoir, along a slightly undulating high plateau between croplands, running parallel to the canal until Argamasilla de Alba.
- Stages 3 to 6.** The trail will take the traveller, among vineyards and olive groves, along the highest part of the plateau in La Mancha, which will continue parallel to the Cigüela river once it passes by Villarta de San Juan. Continuing among the crops, you will get to the reappearance of the Guadiana river, at the **Tablas de Daimiel National Park**.
- Stages 7 to 11.** Next, the Castle of Calatrava will meet the traveller and a few kilometres further on, the trail borders the El Vicario reservoir. The trail runs along croplands, and the traveller can visit the volcano of Laguna de la Posadilla, declared Natural Monument. Likewise, it runs next to the Iberian-medieval archaeological site of Alarcos, in a hill nearby the Guadiana river course. At this point, the trail runs next to the river, plunging into the area protected by the Natura 2000 network, called 'Ríos de la Cuenca media del Guadiana y laderas vertientes' (rivers of the middle basin of the Guadiana river and side slopes).
- Stages 12 to 15.** The trail accompanies the Guadiana river as it runs along the county of Campo de Calatrava, going along the Royal Drover's Road of Sorla, crossing it by the Ovejás bridge. It continues along the Ginés mountain range and, further on, next to the Valpérez mountain range. The landscape changes once you get close to the Bullaque river, nearby



El Hundimiento^o waterfall



SECTOR PENINSULAR CENTER



Luciana. Next to Molino del Comendador, you will cross over the Guadiana river in order to reach the Sacereuela mountain range. You will then descend until the meadows of Puebla de Don Rodrigo, only to come back to the banks of the Guadiana river, in Estrecho de las Hoces, ravine through which the river crosses the mountains that separate Ciudad Real and Badajoz, and the Bueyes mountain range, nearby the **Cabañeros National Park**.

- Stages 16 to 18.** Afterwards, the trail reaches Villarta de los Montes, when the traveller will be able to see the Cijara reservoir. From here, the trail traverses the Rinconada mountain range and goes down to Helechosa de los Montes, before climbing up again to the Rinconada mountain range.
- Stages 19 to 21.** After passing by the Poblado de Guadisa, the trail continues running along paths on the banks of the Cijara reservoir. Abandoning the reservoir's banks, the trail comes closer to the García Sola reservoir, which is located downstream from the first one. Once the trail meets its bank, it runs next to it until it reaches the road leading to Castilblanco. After leaving this town, the trail continues until Herrera del Duque.
- Stages 22 to 31.** The trail, which is now on the other side of the García Sola reservoir, runs along the service road of the Canal de las Dehesas. This way, you will reach Casas de Don Pedro, and you will meet after that the Las Merinas Track, which goes until Puebla de Alcocer. The traveller will see himself absorbed in the meadows of Extremadura until bordering the largest fresh water dam in Extremadura, the Orellana reservoir.
- Stages 26 to 32.** From Orellana la Vieja, the trail runs along the sweet coast of Extremadura until it ends in the irrigated lands of Vegas Altas in Extremadura, crossing the Guadiana and the Zújar rivers at the town of Entreríos. The itinerary starts going away from the Guadiana river via the Santa Lucía road, when the



Views of the river downstream the García Sola reservoir



BETWEEN THE LAKES IN LA MANCHA AND HUELVA, IN COMPANY OF RÍO DE LOS PATOS

DE NPO

- Stages 33 to 40.** The trail continues through paths and ways next to the Montijo reservoir, until it reaches Vegas Bajas del Guadiana. Continuing through the Royal Drover's Road of Sancha Brava, the trail meets the Gévora river, tributary of the Guadiana river, declared Site of Community Importance, until it reaches Badajoz. The trail, already in the county of Llanos de Olivenza, reaches San Francisco de Olivenza, reaching a quay in Villareal from which the traveller can admire the defensive walls of Jurumeña in Portuguese land. Before this stretch of the trail ends, it is possible to visit the town of Chelès, and its beach and quay, before arriving in Villanueva del Fresno.
- Stages 41 to 44.** After the stretch where the Guadiana river enters in Portuguese land, the itinerary next to the river resumes at the province of Huelva, next to the hostel in the old residential barrack of Cañaveral. The trail initially runs parallel to the Guadiana river on its left bank until it arrives at the port in La Laja, where it coincides with a stretch of the Guadiana Greenway Nature Trail that will allow the traveller to come closer to El Granado or continue the route to Sanlúcar. Continuing until the Los Romeranos rest area you will leave the Guadiana riverbanks behind, and run along wide dirt roads, far away from the Guadiana river and, alongside the Vereda de la Zaballa you will reach San Silvestre de Guzmán and, later on, Villablanca. Walking on low-gradient lands where the nearby ocean breeze can be felt, you will reach the town of Ayamonte, where the Guadiana Nature Trail finds its end.

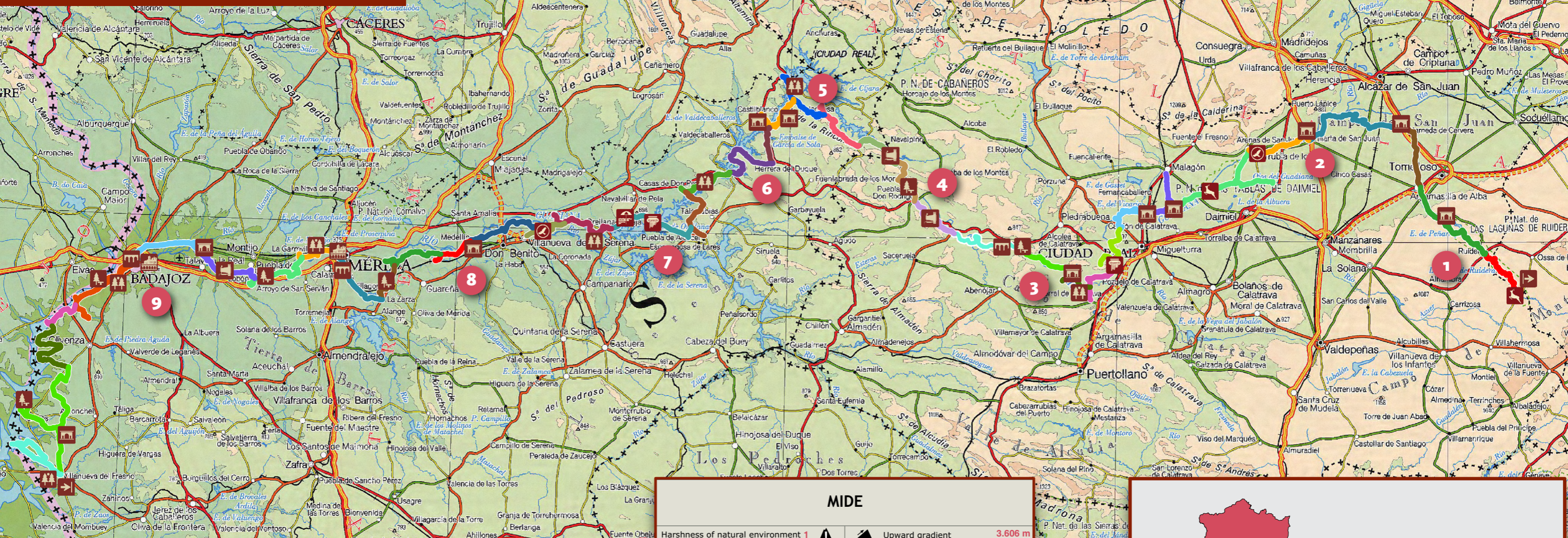


Marshes area and the Guadiana International Bridge

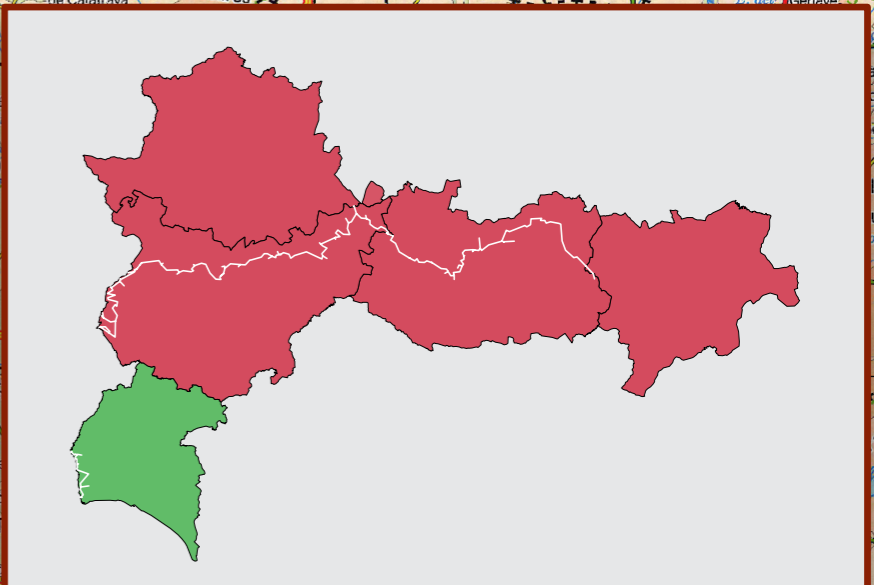
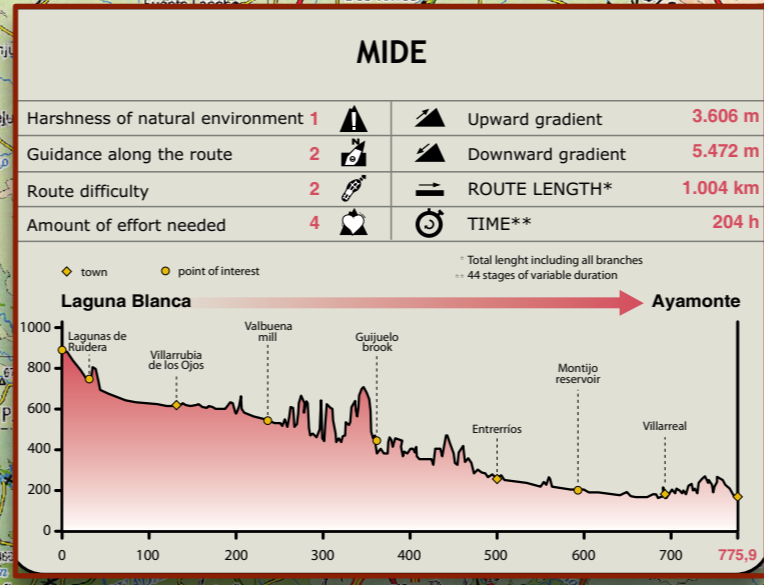
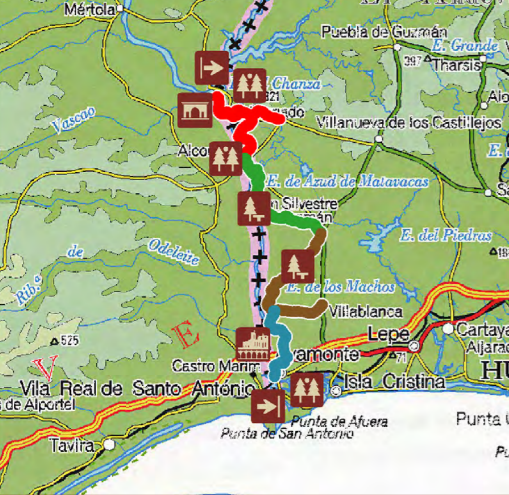
DE NPO

The Guadiana Nature Trail allows the traveller to go across protected nature areas and areas which are part of the Natura 2000 network, to share itineraries and connect with other nature trails, cattle tracks, greenways or routes like the Don Quijote one, always having as main protagonist the Guadiana river and its tributaries. Romans used to call it river Ana, *Fluminus Anaë*, 'río de los Patos' (duck river); Muslims replaced the word 'river' in Latin (*fluminus*) with the same word 'river' in Arabic: *Uadi, Uadi-Anas*. The trail, which runs between the Blanca Lake (Albacete) and Ayamonte (Huelva), consists of 44 stages. It runs along the province of Albacete, Ciudad Real and Badajoz, until stage 40. The part of the nature trail of the province of Huelva consists of 4 stages, being stage 40 and 41 separated by the Portuguese stretch of the Guadiana river.

GUADIANA NATURE TRAIL. ALBACETE, CIUDAD REAL AND BADAJOZ



GUADIANA NATURE TRAIL. HUELVA



SECTOR PENINSULAR CENTER



NATURE TRAIL GUADIANA

- Starting point
- End of trail
- Rest area
- Viewpoint
- Monument
- Birds observatory
- Feature of environmental interest
- Natural/National Park
- Bridge
- Monumental area
- Archaeological site
- Beach area