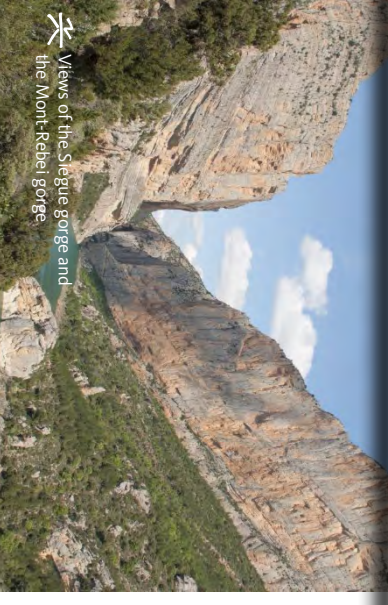




View from the upper part of the second walkway of the Mont-rebei gorge.



Hanging bridge over the Canelles dam of the Siegué gorge.



Views of the Siegué gorge and the Mont-rebei gorge.

8. The trail ends as it reaches the historical path GR-1 "Sendero histórico". From the end of the trail you can either retrace your path to go back to the Montfalcó hostel, or continue northwards along the GR-1 towards La Masieta (4 km away), traversing the Mont-rebei gorge. This gorge is located a few minutes away from the end of this Nature trail and it is 2 kilometers long. Another alternative is going southwards along the GR-1 path towards Corça in order to climb to the Mas de Carlets shelter and reach, further away, the Romanesque hermitage of Mare de Déu de la Pertusa, before arriving to Corça, which is 5 kilometers away from this spot and from Ager.

7. After crossing the second walkway, the trail goes towards the Siegué gorge through a steep downhill slope and over the hanging bridge. Once you cross it, you will go on uphill towards a viewpoint from which the Mont-rebei gorge is visible. From here, as well as from the highest spots of the trail, trail users can see numerous birds of prey flying, such as bearded vultures, golden eagles, Egyptian vultures or peregrine falcons.

6. After the first walkway, the trail continues uphill until a smaller rock wall that can be bordered with no difficulty. Then you will encounter a short descent and finally a small ascent that reaches the edge of the walkway on rock. After this stretch, the trail continues along an embankment protected by steel towropes on the most exposed areas. The

5. The trail continues downhill. Through open areas, trail users will be able to see the area between the Canelles dam and the Corral de las Viñas. After this structure, the trail continues descending until it reaches the first wooden walkway hanging from the stone headland. The landscape changes in this stretch, as you can distinguish the limestone headlands with warm colors, and the blue-greenish waters of the Canelles dam.

4. The first part of the trail follows a steep descent until the small rest area and the fountain of Montfalcó. This lane has information posters about the flora and fauna of the area, and it is supplied with the small viewpoints from which you can peek your head out to admire the Montsec mountain range, which is part of the exterior mountain ranges of the Central Pyrenees. From this spot onwards, the trail continues descending until it reaches some stepping stones installed on the course of the La Tartera ravine.

most particular singularities of the area are the rock formations of the flora (the endemic, very rare *Petrocoptis montisciana* stands out), and its fauna rich in birds of prey.

3. In general, this trail features rich vegetation with Mediterranean species; trail users may also find black pines, residual common box accompanied by other species such as rosemary, strawberry trees, etc. However, the

2. This trail has high narrow walkways, not suitable for people suffering from vertigo. There is a path leading to the restored Romanesque hermitage of Santa Quitèria and San Bonifacio, where you can admire a splendid panoramic view of the area.

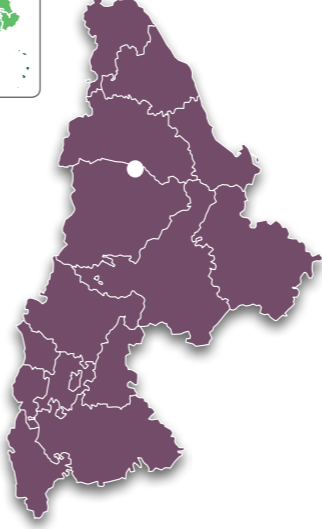
1. The nature trail starts at the environmental tourism hostel Casa Batlle. In order to get to the hostel, you must go to Viacamp, the closest inhabited town, where the Interpretation Center of the Montsec de l'Estall Mountain Range is located. At this center you will be able to get information about both the nature trail and the surrounding area. From Viacamp to Montfalcó (15 km) you can drive on a well-conditioned unpaved track. During the route, you will be able to observe how the landscape changes and you will pass nearby the abandoned village of L'Estall. The track is the starting point of two other paths from which you can visit the also abandoned towns of Fet and Finestras. Please note that, if you're thinking of visiting them, you will need an off-road vehicle. Once you have reached the hostel, park your car to start walking on the trail. The hostel has a bar and they offer active tourism activities.

SECTOR NORTHEASTERN PENINSULAR NATURE TRAIL MONTFALCÓ TO THE MONT-REBEI GORGE

CAMINO REAL FROM ALCOVER TO MONT-RAI



SECTOR NORTHEASTERN PENINSULAR



CONNECTING THE RIVERBANKS OF RIVER NOGUERA RIBARGORZANA IN THE MOUNTAIN RANGE OF MONTESEC: THE SPECTACULAR MONT-REBEI GORGE

The Montfalcó to Mont-rebei gorge Nature Trail connects the uninhabited area of Montfalcó, in the region of La Ribagorza in Huesca, with the La Masieta-Corça stage of the historical path GR-1 "Sendero histórico" in the region of La Noguera in Lérida. This trail allows its users to enjoy the spectacular limestone orography of the Montsec mountain range, carved out by the river Noguera Ribagorzana, which works as natural border dividing this mountain range into two: Montsec de L'Estall on the Aragonese side and Montsec D'Ares on the Catalan side, creating the vertiginous Mont-rebei gorge. The trail passes through two stone headlands via wooden walkways anchored to the stone. It also runs through the Canelles dam, over a hanging bridge that was built thanks to specialized equipment for works at heights.

Since 1993 the Ministry for Agriculture, Food and the Environment's Nature Trails Program aims to restore former transport infrastructures such as railway tracks, cattle trails and traditional routes, for public use and enjoyment.

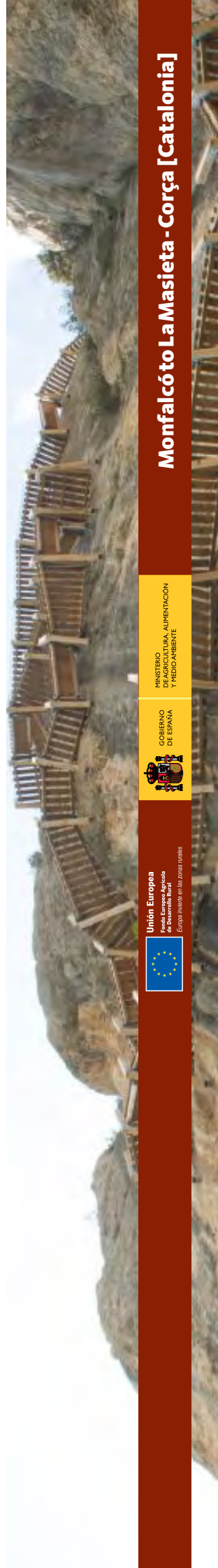
These routes take us to the countryside to discover the biodiversity and beauty of our precious natural heritage, and discover the villages, sights, traditions and people that are part of the unique cultural landscape of our country.

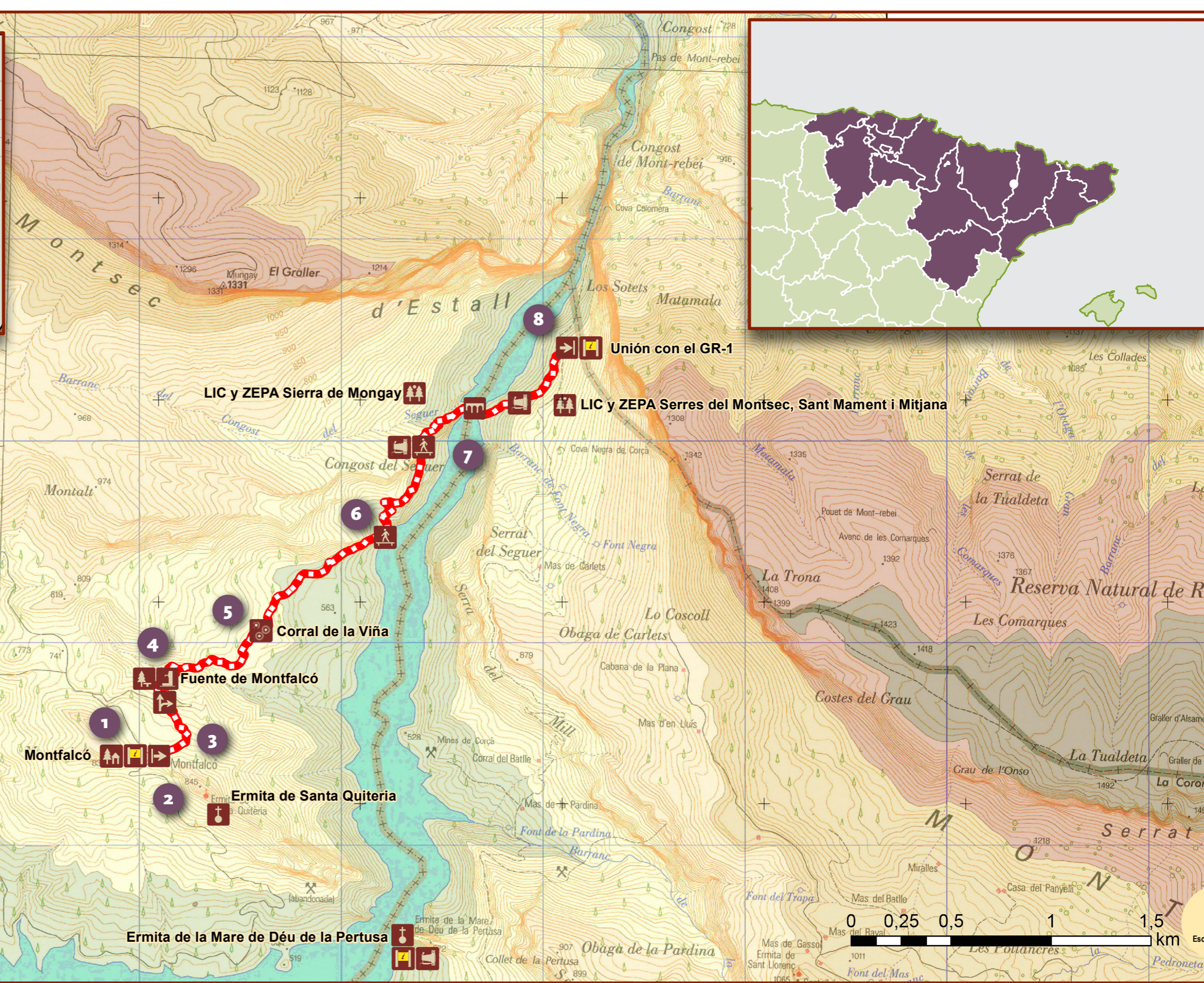
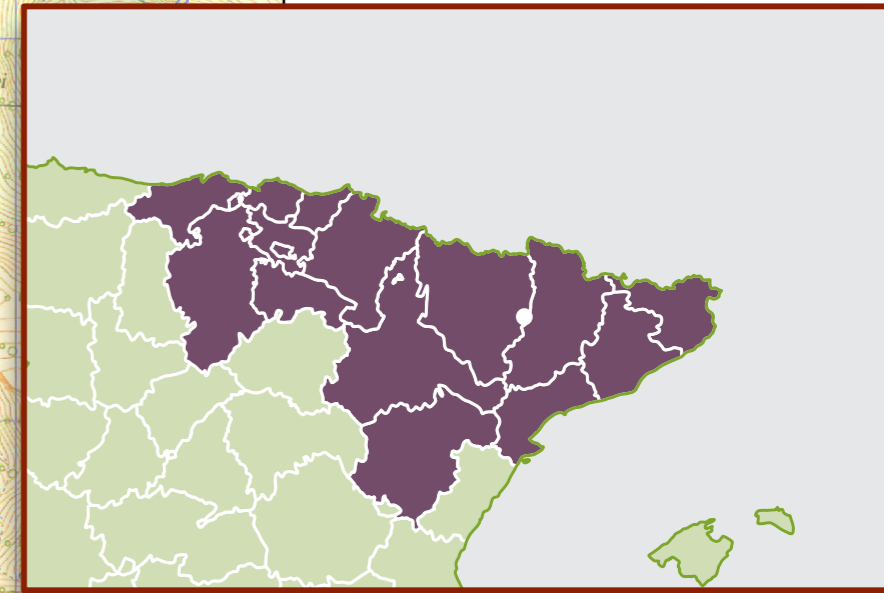
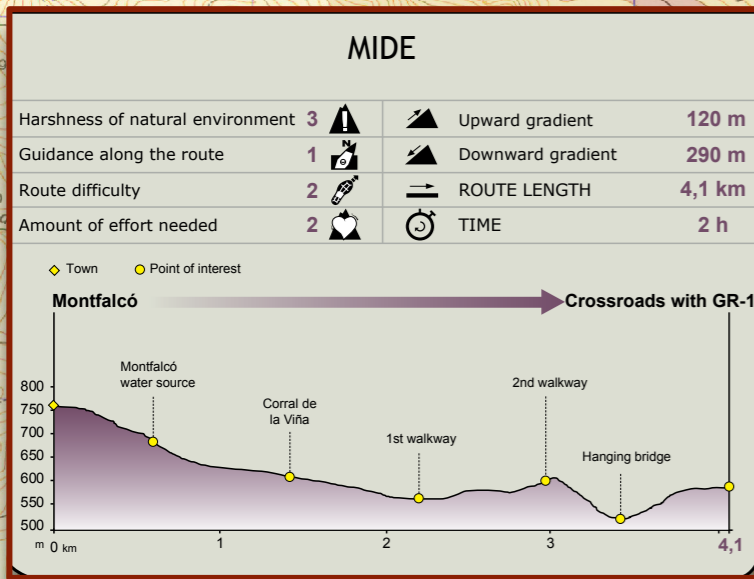
We invite you to visit them and offer you the keys to enjoy the trip. In this brochure you will find a brief description of the Route from Montfalcó to the Mont-Rebei Gorge Montfalcó to La Masieta-Corça Nature Trail and the map for the journey, along with recommendations to make the most of this experience. We only ask one thing of you: do not forget to leave everything as you found it. The conservation of these pathways is also your responsibility.

TELEPHONES OF INTEREST:

- Region of Ribagorza 0034 974 54 03 85
- Regional Council of la Noguera 0034 973 44 89 33
- Montfalcó Hostel 0034 974 56 20 43
- City Council of Viacamp y Llitera 0034 974 34 72 50

NATURE TRAIL MONTFALCÓ TO THE MONT-REBEI GORGE





SECTOR
NORTHEASTERN PENINSULAR



NATURE TRAIL
**MONTFALCÓ TO
THE MONT-REBEI
GORGE**

- | | | | | |
|-------------------|-----------|--------------------------|-----------------------------------|-----------|
| Starting point | Rest area | Shrine | Bridge | Viewpoint |
| End of trail | Hostel | Fountain | Feature of environmental interest | |
| Information panel | Detour | Other sights of interest | Walkway | |