

Corporate presentation Royal Agrifirm Group



link to success



What is Agrifirm? In a nutshell

- Started in 2010 as a merger of co-ops Cehave Landbouwbelang and Agrifirm.
- Holding with subsidiaries in livestock and arable farming.
- International company, worldwide sales, production in Europe and China.
- Members in the Netherlands: 18,000 farmers.
- 2,956 fte, over 3,500 employees.
- Turnover 2013: € 2.5 billion.



Our mission

Agrifirm creates **value for its members**:

- Our subsidiaries support clients by offering sustainable, profitable concepts to achieve the best results.
- Value growth of the company is transferred to the members by distribution of profit.

Financial (2013)

Turnover:

€ 2,5 billion

Group Equity:

€ 393 million

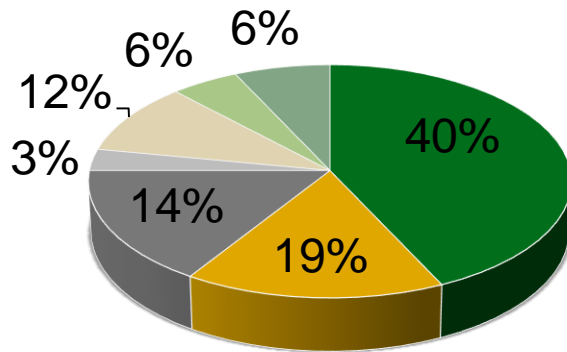
Solvency:

48,6%

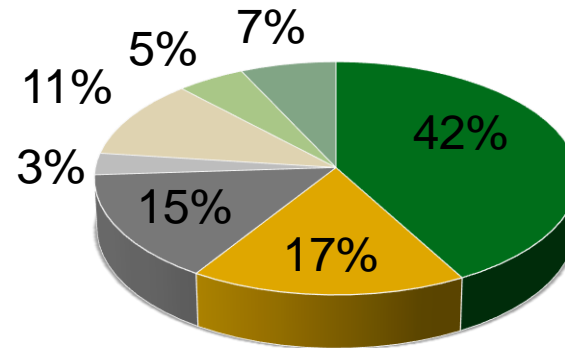
Summary turnover Agrifirm Group (2)

Agrifirm turnover by activity

2013



2012



- Feed Netherlands
- Feed Europe
- Plant Netherlands
- Plant Germany
- Nuscience
- Co-products
- Other activities

Core values: our DNA

Together:

With each other, with our clients/suppliers.

Honest business:

Fair pricing, no surprises.

Quality:

We never stop doing things better.

A decorative graphic on the left side of the slide showing a close-up of several fresh raspberries. The raspberries are vibrant red with some green leaves visible at the bottom.

Brand values: our image

Innovative:

We are leading in knowledge and concepts.

Dedicated:

We act in the client's interest and are thinking along.

Result driven:

We deliver solutions for the client's result.

Sustainable:

We contribute to 'the licence to produce' of our clients.

International business



International business



International business



International business



International business



International business



International business



International business



International business



International business



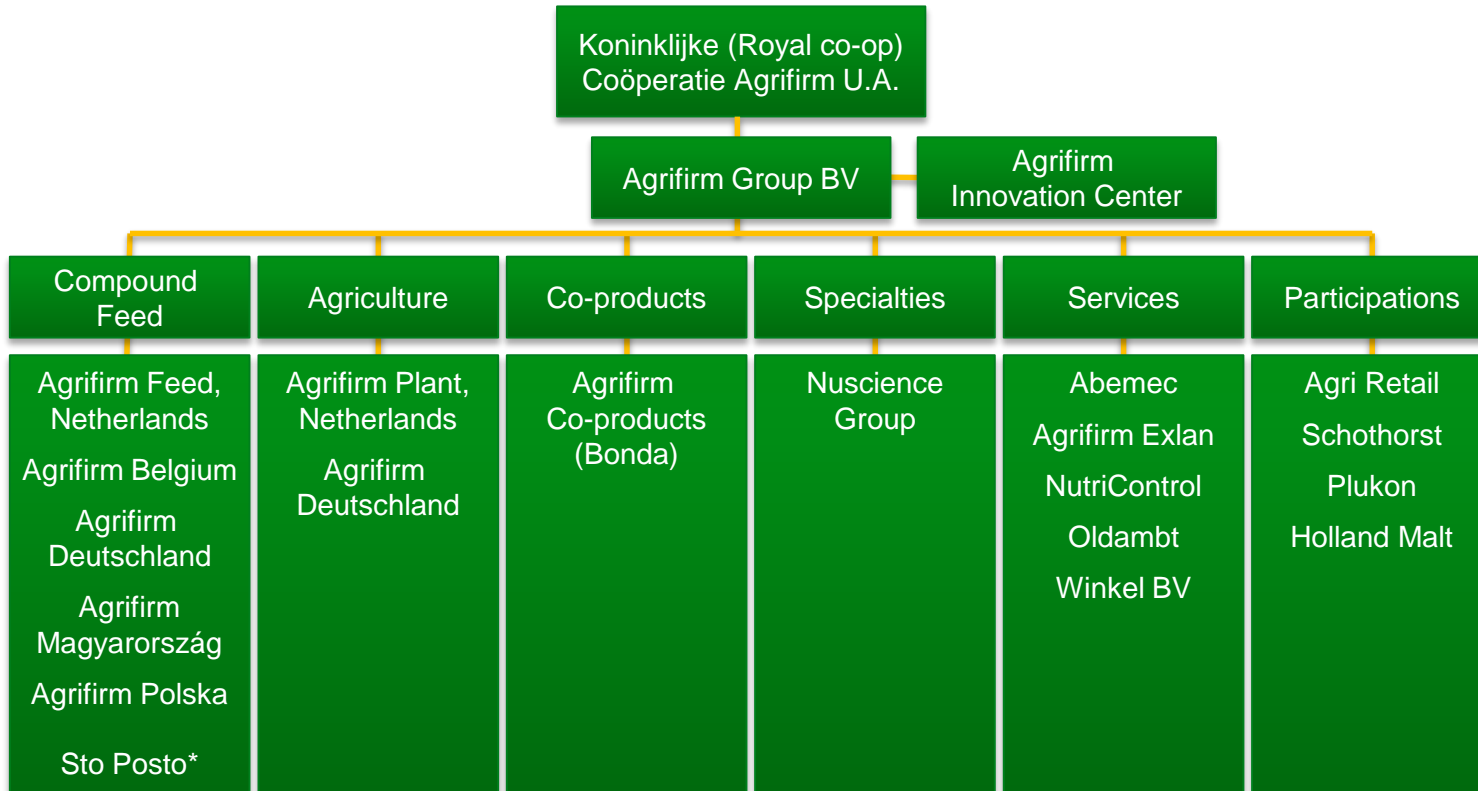
International business



International business



Organization Royal Agrifirm Group



* Minority interest

Agrifirm Feed

Country	Production locations	Tonnes compound feed
Netherlands	7 factories	2.758.000
Belgium	1 factory	269.000
Germany	3 factories	687.000
Hungary	3 factories	222.000
Poland	3 factories	182.000
	total	5.118.000



Plant Agrifirm Zwolle

- Current year production: 300.000 ton
- 1.000 ton of Pig feed per day
- Operating time 145 hours a week
- Four shifts
- Total staf 22 persons



Plant Agrifirm Zwolle

- Storage capacity raw materials 6.000 ton
- 50 storage silos for raw materials
- 56 storage silo for premix
- Max storage finished goods 2.000 ton
- 100 storage silos for finished goods



Plant Agrifirm Zwolle

- Intake raw materials 75% by ship
- Efficient loading of trucks by robot
- Only 2 operators to run the factory
- Highly automated
- Close to the customer



We are a

Link to success for farmers



link to success