

Better Training for Safer Food *Initiative*

The Feed ban & ABP Regulation

Christophe Keppens & Neil Leach





European
Commission

BTSF System



European
Commission

TSE Prevention

SRM
Removal

Feed
Ban

ABP Regulation



European
Commission

B T S F A B P

Two steps

The ABP producer

Categorisation by **known** risk

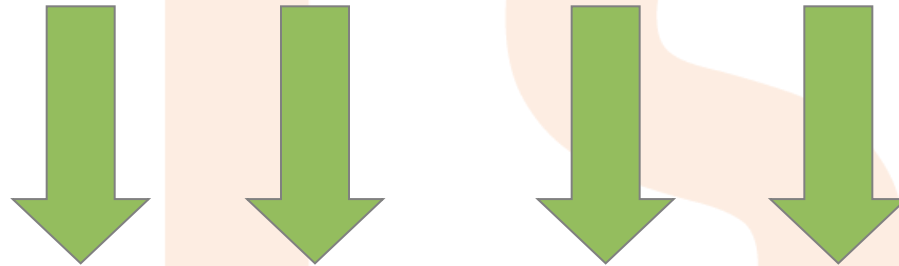


Send to destination safe for category

The ABP operator

Requirements for ABP operator

Send to destination safe for category



Register

Registration
unless approval

Treat

To deal with
microbiological
risks

Check

Own checks
+ sometimes
HACCP

Trace

Identification +
Commercial
document

Approved establishments - Lists of approved ABP establishments

Topics

Introduction
 Food sector
 Animal by-products sector
 Feed sector

EU Member States



AT

Österreich



BE

Belgique/België Kypros/Cyprus



CY

Kypros/Cyprus



CZ

Ceská

Republika/Czech

Republic



DE

Deutschland



DK

Danmark



EE

Eesti



EL

Ellás



ES

España



FI

Suomi



FR

France



HU

Magyarország



IE

Ireland



IT

Italia



LT

Lietuva



LU

Luxembourg



LV

Latvija



MT

Malta



NL

Nederland



PL

Polska



PT

Portugal



SE

Sverige



SI

Slovenija



SK

Slovensko



UK

UK, excl.

Northern Ireland

Northern Ireland



BG

Bulgaria



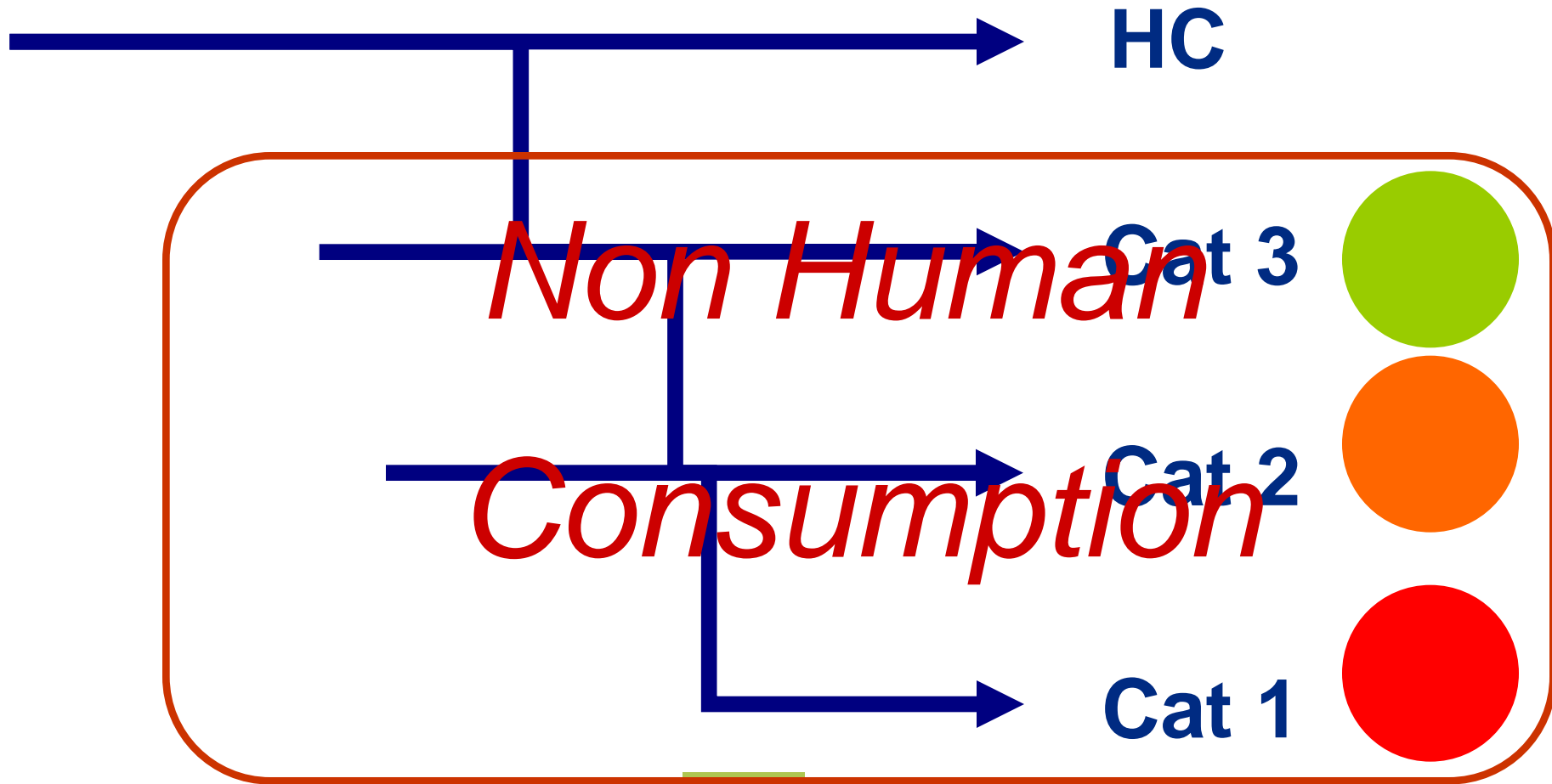
RO

Romania



European
Commission

Categories of ABP



Hazards in each category

Category 1

Risk of prions

Risk of banned products or contamination

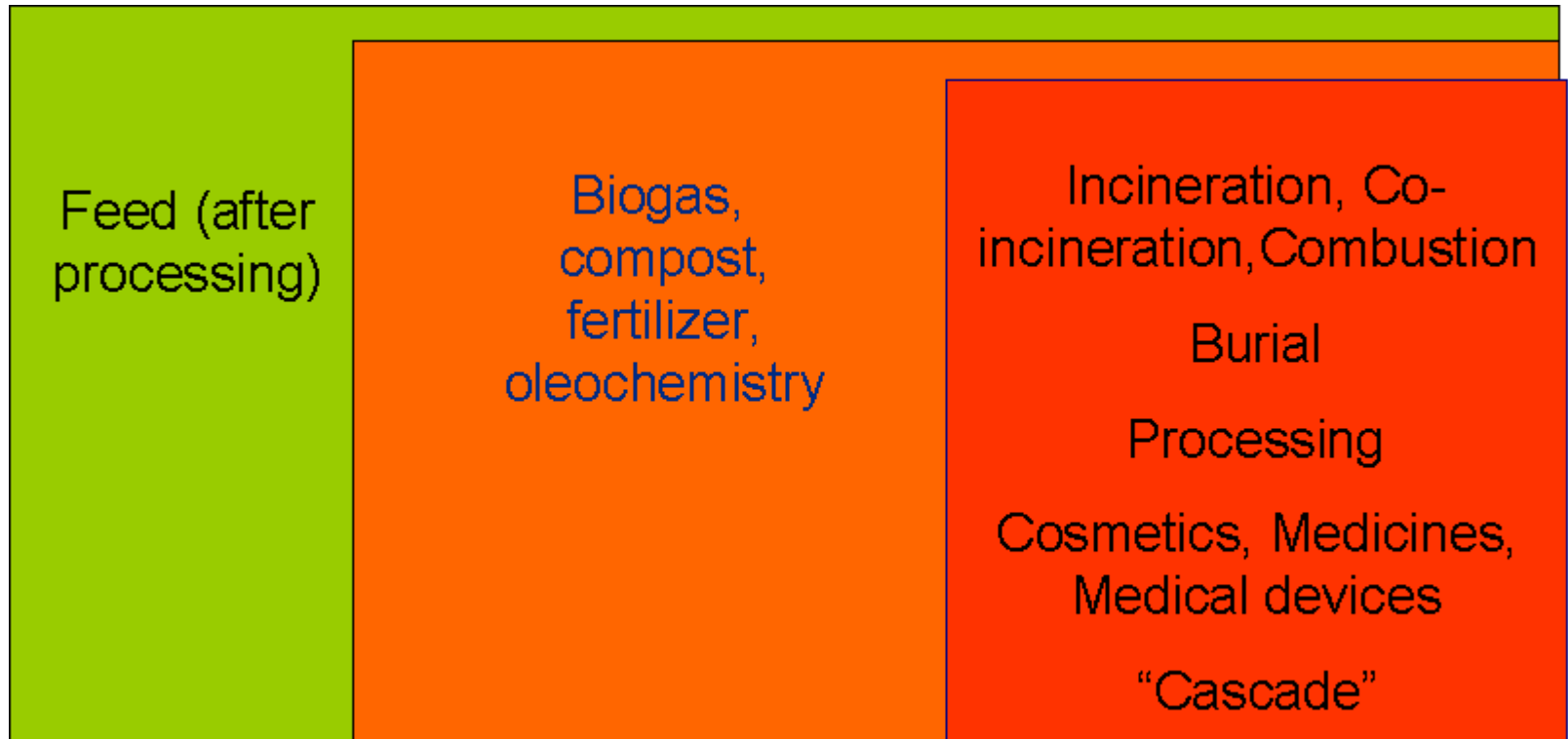
Category 2

- Microbiological risk
- Residues of medicines

Category 3

- Origin of healthy animals

Most frequently used authorized destinations



Some other destinations

- Special feeding purposes
- For exhibitions, artistic activities, diagnostic, educational or research purposes
- Trade samples & display items
- Surgical intervention at farm disposal
- Biodynamic preparations
- Crisis measures
- ...

Ban for feeding

Cannibalism ban

- Terrestrial: PAP species X to species X
- PAP of farmed fish species Y to farmed fish species Y

Catering waste ban

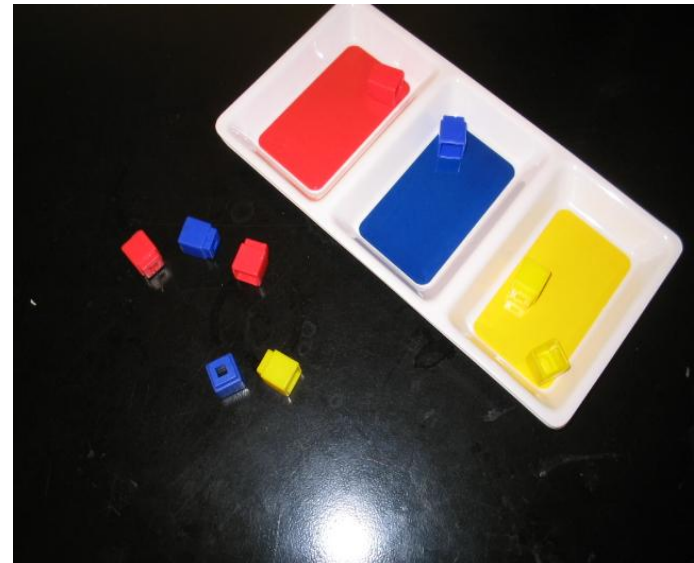
- To farmed animals
- Also derived from catering waste

21 days waiting period for OF/SI

- Access to pasture land
- Harvest feed materials

1 sentence summary

Identify the risk of the material &
send it to an appropriate
destination



Prepare to vote; keep your phone ready!

European
Commission

Internet

1

2

The text on this slide will instruct your audience on how to vote. This text will only appear once you start a free or a credit session.

TXT

2

Please note that the text and appearance of this slide (font, size, colour, etc.) cannot be changed.

Twitter

1

2

Voting is anonymous

Do all category 1 material need to be stained with a dye?

A. *Yes*

B. *No*

C. *Only certain fractions of category 1 materials*

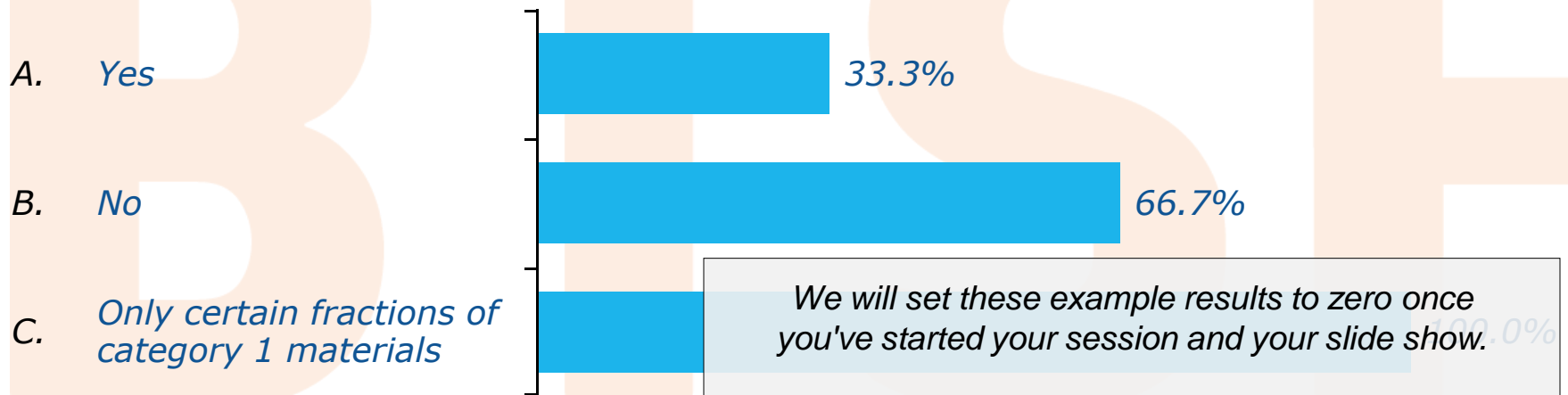
votes: 0

 Closed

Internet
TXT
Twitter

This text box will be used to describe the different message sending methods. The applicable explanations will be inserted after you have started a session. It is possible to move, resize and modify the appearance of this text box.

Do all category 1 material need to be stained with a dye?



**Internet
TXT
Twitter**

This text box will be used to describe the different message sending methods. The applicable explanations will be inserted after you have started a session. It is possible to move, resize and modify the appearance of this text box.



European
Commission

BTSF Feed Ban

Feedban legislation

Regulation 999/2001

- Article 7 & annex IV

Works together with ABPR

- What? 999/2001
- How? 1069/2009



European
Commission

Feed ban

Title "animal feeding", what with
OF/SI?

Is protein ban

- Fat?
- di-/tricalcium phosphate?

	Farmed animals (other than Fur animals)			Pets & fur animals
	Ruminants	Non-ruminants	Fish	
Egg(prod)milk(prod)				
Non-rum gelatine				
Hydr. Proteins of non-rum or hides of rum				
Fish meal	Only in milk replacers for young rum		No aquacult in aquacult	
Di-tri calcium phosphate				
Bloodprod of non-rum				
Bloodmeal of non-rum				
PAP of non-rum				No cannibalism
Other				No cannibalism

Insect are hot item in feed

- Still banned
- Why? Are PAP of non-ruminants not authorized for aquafeed?

The feed ban is more than just “what can I give”

- Avoidance cross-contamination
- Pure raw materials
- Import/export (also OF/SI)
- Use on farms



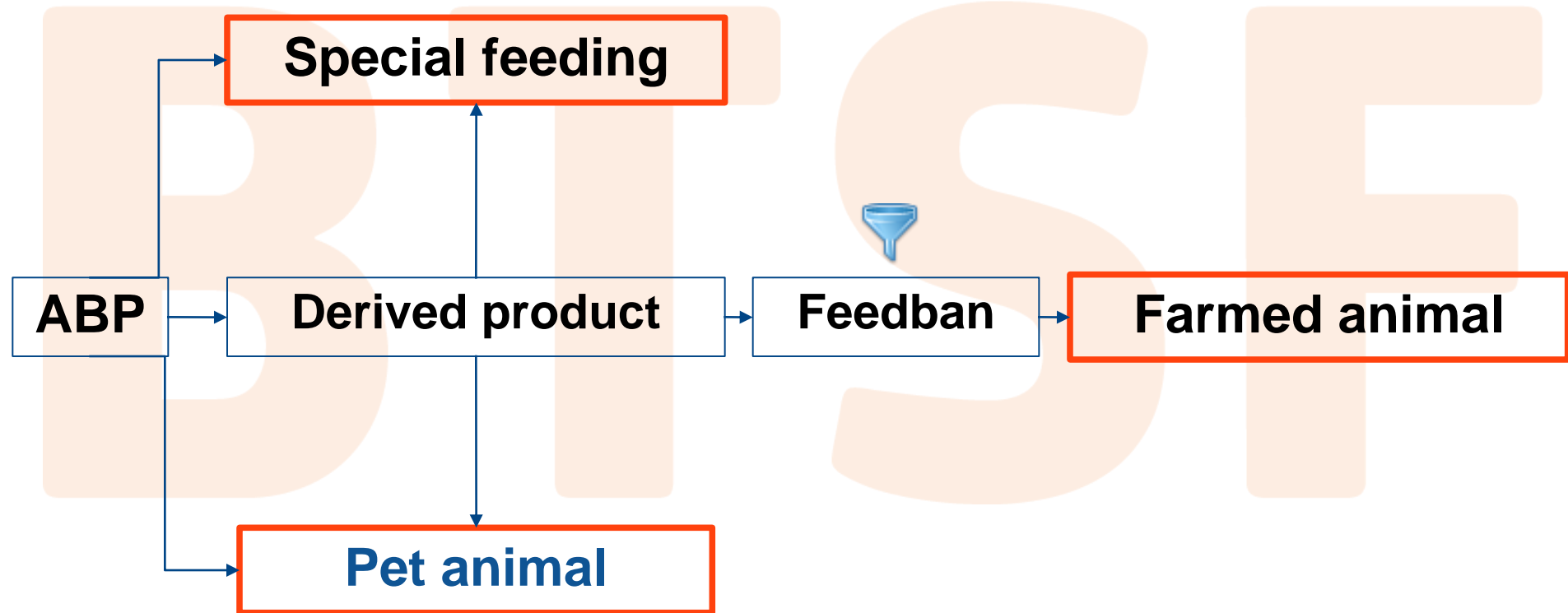
European
Commission

3 feeding options



European
Commission

Flowchart Feeding ABP



Can I use rendered pig fat in feed for pigs?

- A. *Yes*
- B. *Yes but only for pet pigs*
- C. *No*

votes: 0

 Closed

**Internet
TXT
Twitter**

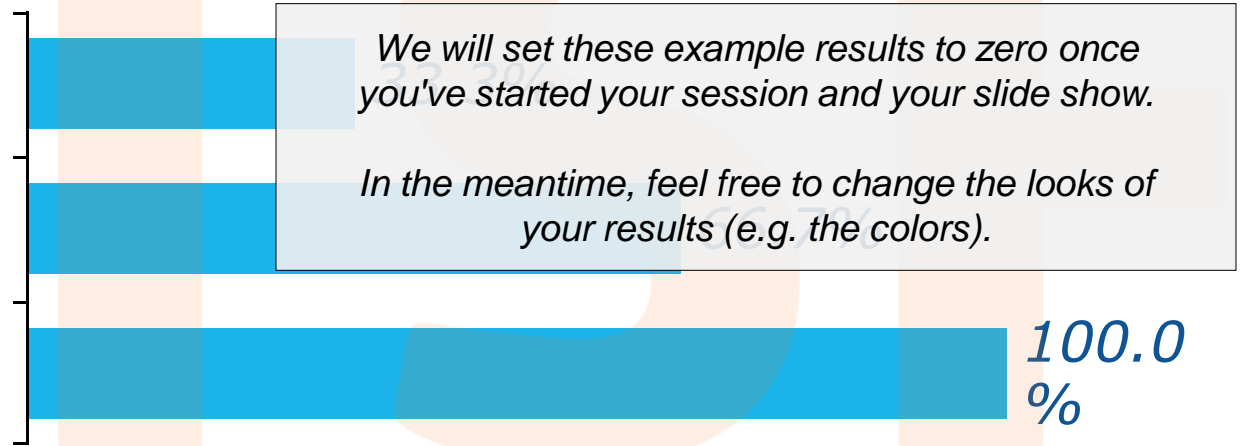
This text box will be used to describe the different message sending methods. The applicable explanations will be inserted after you have started a session. It is possible to move, resize and modify the appearance of this text box.

Can I use rendered pig fat in feed for pigs?

A. Yes

B. Yes but only for pet pigs

C. No



● Closed

Internet
TXT
Twitter

This text box will be used to describe the different message sending methods. The applicable explanations will be inserted after you have started a session. It is possible to move, resize and modify the appearance of this text box.



European
Commission

Thank you

Questions?



JVL
CONSULTING



*JVL Consulting s.a.
Rue Matagne 15
B-5020 Vedrin
Belgium*

Website: <http://btsf.euroconsultants.be>

Better Training for Safer Food BTSF

*European Commission
Consumers, Health and Food Executive Agency
DRB A3/042
L-2920 Luxembourg*