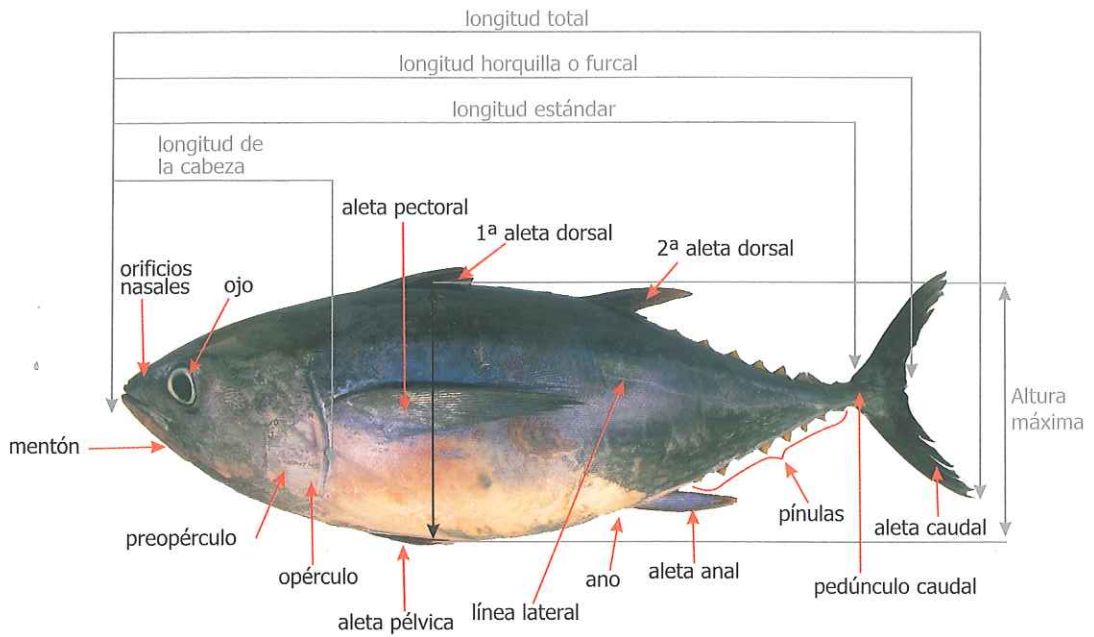
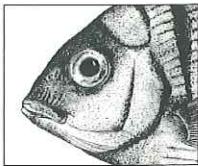


# TÉRMINOS TÉCNICOS Y PRINCIPALES MEDIDAS UTILIZADAS

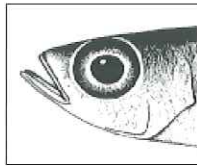
## MORFOLOGÍA EXTERNA: PECES



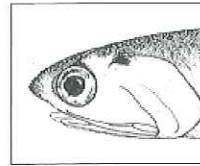
### Tipos de boca



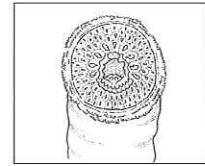
terminal



oblicua

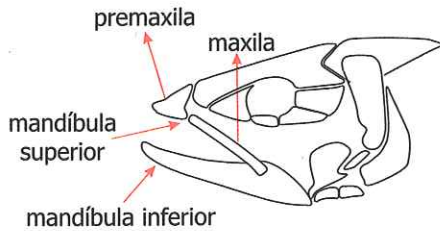


ínfera

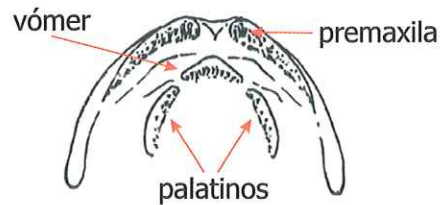


circular

### Partes de la mandíbula



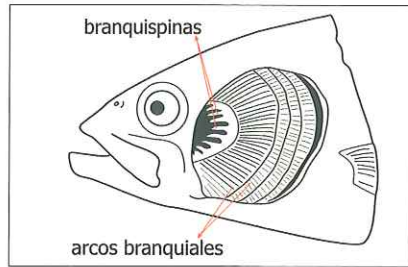
### Partes del paladar



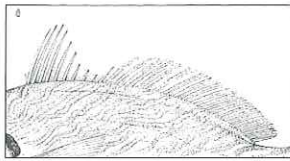
### Tipos de dientes



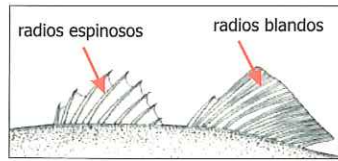
## Branquias



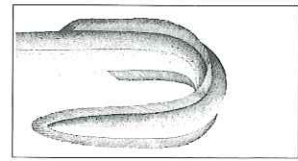
## Forma y composición de la aleta dorsal



aleta dorsal escotada

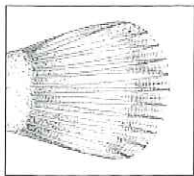


dos aletas dorsales separadas

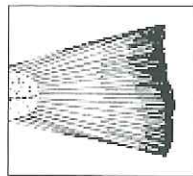


aletas confluyentes

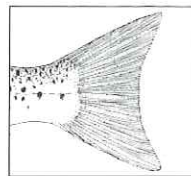
## Forma y composición de la aleta caudal



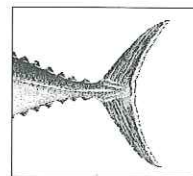
redondeada



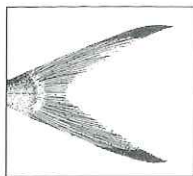
truncada



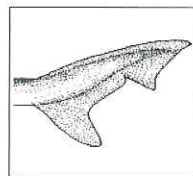
emarginada



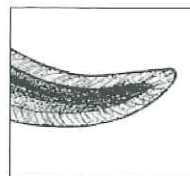
media luna



ahorquillada

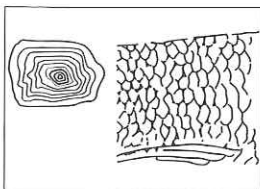


heterocerca

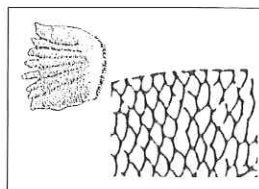


lanceolada

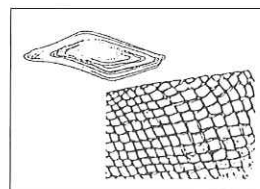
## Tipos de escamas



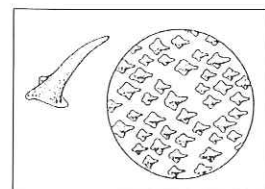
cicloideas



ctenoideas



ganoideas



placoideas